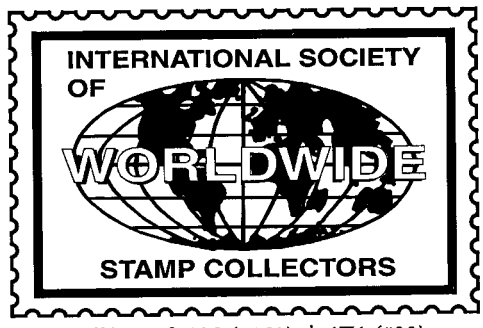


Property of
American Philatelic Research Library
P. O. Box 8000
State College, PA 16803

The Circuit



Affiliate of: APS (#153) & ATA (#89)

www.iswsc.org

March/April 2002 • Volume 20 No. 2

The Official Journal of the International Society of Worldwide Stamp Collectors

ISWSC Board Meeting January 13, 2002

by Randy Smith (#1111)
ISWSC President

The 2002 ISWSC Board met electronically on January 13, 2002 for the first time. The finance report was presented and it was noted that the ISWSC is in good financial shape with a net income of \$4383.00 for 2001 (see Executive Director's Column on page 4 for more details). There will be no need for a dues increase to cover the anticipated postal increase.



Membership was the main topic of conversation, with various suggestions and proposals for increasing our visibility and gaining new members. It was the general consensus that brochures left at stamp shows are not too successful, but are inexpensive, so worth doing.

We will also look into costs for

advertising in *Linn's* and *Global Stamp News*, as well as seeking free publicity through letters to the editor and possibly writing an article about worldwide collecting for publishing consideration. We will also encourage our regional representatives to publicize the ISWSC in periodicals in their area.

Any member wishing brochures to take to their stamp clubs or shows can contact Tony Zollo. We will also resume sending reminders by e-mail or regular mail when a membership is due to be renewed.

Articles for the newsletter was also discussed. Regular reports from the managers of programs will be solicited, as well as periodic articles describing their programs in more detail. The president and executive director plan regular updates and summaries of board meetings will be provided on a regular basis.

The Board plans to meet monthly, although we may explore other formats (instead of the chat room).



Whatzit? Coordinator(s) Sought

Are you good at identifying the country a stamp comes from? Are you handy with reference materials? Do you like to solve a good mystery? If so, you are the person we're looking for!

The ISWSC is seeking one or more members to serve as coordinator(s) of the Whatzit? Program. This program gives other members someone to turn to for help in identifying those difficult stamps. The coordinator(s) are responsible for providing timely responses to member's requests for help and for

writing a short Whatzit? column for the newsletter. The column highlights some of the stamps submitted for identification, sources for stamp identification, challenging stamps you've come across, or maybe even something that still has you stumped!

If this sounds interesting to you, or if you would like more information, please contact Randy Smith (see page 2).



OFFICERS, MANAGERS & SERVICE CONTACTS

President: Randy Smith (#1111)
P.O. Box 21115
Eagan, MN 55121-0115 – USA
rasmary4@earthlink.net

Executive Director & Immediate Past President (Board Member):
Anthony Zollo, MD (#856)
P.O. Box 15047
Lufkin, TX 75915-0407 – USA
zolloam@lcc.net

Secretary/Treasurer: Joanne Berkowitz (#98)
125 43rd Street
Sacramento, CA 95819-2101 – USA
joannebe@pacbell.net

Vice President for Charitable Services:
Mike Crump (#2126)
P.O. Box 57
Yorba Linda, CA 92885-0057 – USA
StampGuy47@aol.com

Vice President for Public Relations:
Tom Fortunato (#379)
42 Maynard St.
Rochester, NY 14615-2022 – USA
stamptmf@frontiernet.net

ISWSC Board: Joan Roderick (#669)
12 Red Oak Road
Asheville, NC 28804 – USA
jnroderick@earthlink.net

ISWSC Board: Ken Costilow (#142)
Virginia Beach, VA – USA
kcos32@home.com

Immediate Past Secretary (Board Member):
Dalene Thomas (#101)
8612 W. Warren Lane
Lakewood, CO 80227-2352 – USA
dalene1@wideopenwest.com

AUCTION

Manager: Everett King (#1389)
P.O. Box 127
Whitehorn, CA 94586 – USA
Ph: 707-986-7230
stamps@whitehorn.com

SALES CIRCUIT

Manager (U.S.): James M. Gaul (#1853)
1920 Fawn Lane
Hellertown, PA 18055 – USA
terrynjim@enter.net

OMNI CIRCUIT

Manager: Jim Millette (#1314)
8901 Marcel Cadieux (#207)
Montreal, PQ H2M 2L9 – CANADA
jmillett@globetrotter.net

Co-Manager: David Paul (#59)
2 Heritage Drive
Belchertown, MA 01007 – USA

Co-Manager: Thomas Pomaski (#410)
stamp10@earthlink.net

President's Column

by Randy Smith (#1111) – ISWSC President

On January 13, your new Board held their first meeting. The Board works throughout the year, on your behalf, to oversee the operation of the ISWSC. One of the items discussed at length was ways to promote the society and to increase its membership. (For a complete list of other items discussed, please see the article summarizing the minutes of the meeting, found elsewhere in the newsletter.)

One of my goals this year is to try to reverse the trend of declining membership. (As of January, we have 469 members – at one time, we had over 800 members.) Former ISWSC members most often cite failing health or lack of time as reasons for resigning or for not renewing their ISWSC membership. Stopping our membership from declining further won't be an easy task, as this

Continued on next page

SWAP CIRCUIT

Coordinator: Randy Smith (#1111)
P.O. Box 21115
Eagan, MN 55121-0115 – USA
rasmary4@earthlink.net

SWAP CIRCUIT MANAGERS

According to the first initial of your last name.

A–I: Scott Sadger (#882)
2140 Miller Road
Buchanan, MI 49107 – USA

J–Z: Jack Searles (#982)
733 Front Street
Olean, NY 14760-2851 – USA

Super Circuit: Randy Smith (#1111)
P.O. Box 21115
Eagan, MN 55121-0115
rasmary4@earthlink.net

CTO Circuit: William Silvester (#1058)
378C Cotlow Road
Victoria, BC V9C 2G1 – CANADA
wgsilvester@shaw.ca

Small (Definitives) Circuit:
Kenneth Wills (#2150)
5308 Shadow Glen Drive
Grapevine, TX 76051-7350 – USA
wills@airmail.net

REGIONAL SECRETARIES

Represent the ISWSC, distribute stamps to youth programs in their region.

Australasia:
Noel Routley (#1610)
C/- Post Office
Redesdale, 3444 – AUSTRALIA
routley@netcon.net.au

British Isles: *Position Currently Vacant*

Canadian Secretary:
William Silvester (#1058)
378C Cotlow Road
Victoria, BC V9C 2G1 – CANADA
wsilvester-iswsc@home.com

Cuba:
Adrian Portuondo (#952)
Apartado 9009
Santiago 90900 – CUBA

Eastern Europe:

Jan Szpyrka (#539)
ul.Srebrna 29
PL-44121 Gliwice – POLAND
szpyrka@zeus.polsl.gliwice.pl

Scandinavia/Baltics:

Martti Vihanto (#830)
P.O. Box 34
FIN-20521, Turku – FINLAND

Western Europe:

Alan Horwedel (#796)
CMR 477, Box 160
APO, AE 09154-0288 – USA
Akazienweg 10
D-74321 Bietigheim-Bissingen
GERMANY
ahorwedel@hotmail.com

NEWSLETTER EDITOR

Jennifer Arnold
310 NW Juniper Lane
Albany, OR 97321-1430 – USA
Ph: 541-967-7043
Fax: 541-967-9515
pizzazz@cmug.com

Please remember that the Editor does not mail out The Circuit. If you have any questions about your Circuit mail service, please contact Randy Smith, Tom Fortunato or Tony Zollo. Thank you!

DEADLINE FOR THE NEXT ISSUE:
MARCH 20, 2002

Phone or send your questions to the appropriate volunteer. Please include a self-addressed stamped envelope or IRC for a reply.

President's Column

Continued from page 2

trend exists throughout our hobby. (For example, take a look at the circulation figures from the past few years for the major stamp publications.) Nonetheless, this is a challenge that we must accept, not just for the benefit of our society, but also for the future of our beloved hobby!

The task is great, and the Board needs your assistance to successfully meet this challenge. So how can you help? It might be easier than you think. Here are a few suggestions:

- **Encourage others to join the ISWSC.** Each additional member brings a potential trading partner, purchaser of an item in a sales circuit, or a bidder in our auctions. This benefits both new and current members!
- **Promote the ISWSC at your local stamp club or stamp show.** Word of mouth is the greatest recruitment tool for the ISWSC. Promotional materials are available from Tony Zollo (Executive Director) or Tom Fortunato (Vice President of Public Relations).
- **Participate in ISWSC programs.** This includes the auctions, sales circuits, and swap circuits. Be a swapper, a seller, a buyer – or all three! Increased participation will bring even better selection and, in the case of auctions and sales circuits, more sales.
- **Write an article (or two!) for the newsletter.** The newsletter, expertly edited by Jennifer Arnold, is the most visible benefit of the ISWSC. More contributions mean more articles which can attract more members. When you're done reading your newsletter, consider passing it along to a potential member!
- **Contribute to the ISWSC Charitable programs.** Mike Crump serves as the Vice President of Charitable Programs. He uses your contributions to introduce our hobby to others and to encourage beginning collectors.
- **Offer suggestions to improve the ISWSC.** You are the ISWSC's greatest asset! My postal and e-mail is always open for your suggestions and comments. I look forward to hearing from you!!

Until next time – Happy Stamping!



Dues/Advertising Policy

Dues Information:

Single/Dealer/Club membership: \$12.00*

Youth membership (under 18): \$10.00*

Family membership (up to 4 persons in one residence): \$19.00*

*Plus 250 large commemoratives for the Youth Program or equiv. donation in US\$. Dues above are for one year and include six newsletters per year. You may sign up for three years at a time. For an application or further information send SASE or IRC to: ISWSC, P.O. Box 150407, Lufkin TX 75915-0407, USA. *There will be a \$2 per year discount if the renewal is received at least one month prior to the current expiration date.*

Advertising Policy:

For reasons of accountability, only members of the ISWSC, APS or ASDA may place ads. All ads dealing with philatelic concerns are acceptable. We reserve the right to edit out objectionable language. Advertisers are expected to respond to all inquiries, so be sure you can handle the responses before you offer to trade, buy or sell. If you have a bad result from answering an ad, contact the Editor. We will try to resolve the conflict.

Display Rates (Camera Ready*) per insertion:

Full page: \$75.00**

Half page: \$40.00**

Quarter page: \$20.00**

Per column inch: \$5.00

Six repeat insertions of the same ad for the cost of five ads (one free). We will also offer a two-sided insertion for \$125 per issue.

*Camera Ready means ready to paste up or scan and print. Reductions and typesetting extra.

** Discounts for three or more insertions of same ad. Yearly display rates available. Write to ISWSC past president Tom Fortunato (see p. 2) for special rates.

Classified Rates per insertion:

First 30 words, including name, address, and ZIP code are \$3. Additional words are 20 for \$1.

NOTE: State abbreviations = one word; "P.O. Box 1234" = two words; ZIP code = one word.

Make all checks payable to ISWSC in U.S. funds. Send text and payment for ads to the Editor. All addresses can be found on page 2.

Executive Director's Column

January 2002

by Anthony Zollo, MD (#856)
ISWSC Executive Director

I hope all of you had a wonderful holiday season. Now that it is over it is time to get back to business! This is my first column since leaving the position of President. However, I still hold the position of Executive Director and as such will continue to manage the financial and business affairs for your society.

I want to take this opportunity to congratulate our new President, Randy Smith. I look forward to working with him. I expect his new level of energy and enthusiasm will translate into real gains for the ISWSC.

For this column I thought I would give a financial report on the ISWSC

Our net worth has increased in the past year as shown in the table below. Most of this increase is due to increased activity of our Sales Circuits and auctions.

Date	Net Worth
1/1/00	\$13,888.54
1/1/01	\$13,808.57
1/1/02	\$17,408.91

The table below shows a summary of all income and expenses for calendar year 2001:

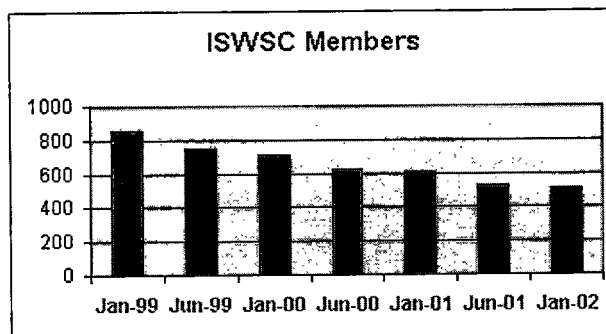
INCOME	
Advertising	\$170.54
Auction Income	\$599.21
Dues	\$5285.72
Interest Income	\$160.75
Sales Program Receipts	\$10,930.72
Youth Donations	\$537.00
Other income	\$44.00
Total Income	\$17,727.94

EXPENSES

Bank Charges	\$8.13
Circuit Expenses	\$4,989.03
Insurance	\$70.00
Postage	\$14.55
Reimbursement for Expenses	\$2,497.15
Sales Program Payments	\$5,329.83
Supplies	\$191.86
Other Expenses	\$244.05
Total Expenses	\$13,344.60

Total Income – Expenses = \$4,383.34

So we are in sound financial shape as we begin 2002. However, the number of active members continues to decline as shown in the graph below:



When members take the effort to contact me and let me know that they will not be renewing, the two reasons for all but a handful of members is that they are:

- Having health problems or pass away
- Are no longer collecting at all or no longer collecting the entire world.

This issue will no doubt be a priority for our new president and all of us who work with him.

Till next time...



TAKE A LOOK AT YOUR RENEWAL DATE

(found on the address label that came with this issue of *The Circuit*)

Please renew promptly to keep your membership current!

Can You Help Identify Stamp Usage?

by Norman S. Young (#739)

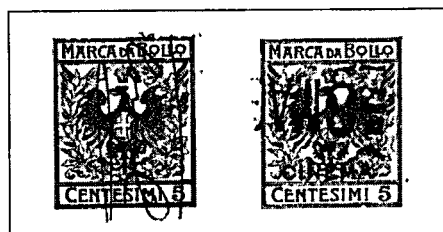
In an accumulation, I came across two interesting, but unidentifiable items (a few of the stamps are illustrated here).

The 1920 set of very common stamps from Ukraine (which were never placed in use) has been overprinted in black with highly inflated values. The three character overprint at the top appears to be Cyrillic characters that resemble the letter Y and two characters that resemble the mathematical symbol pi.

I suspect these are from one of the many autonomous factions, which flourished in that region, perhaps Western Ukraine, but I'm hoping someone can



These common stamps from the Ukraine have interesting overprints.



Could these Italian area stamps have been used to pay some sort of movie tax?

provide more specific input.

The second appears to be an issue from the Italian area, perhaps a revenue stamp. They are light violet in color and the one has a clear black overprint "CINEMA." Could this be some kind of theater or movie tax, or is there another explanation?

Please send responses to:

Norman S. Young
c/o Jennifer Arnold
ISWSC Editor
310 NW Juniper Lane
Albany OR 97321-1430 USA

INEXPENSIVE ALBUM PAGES

How many times have you heard it – album pages are just too expensive! Now there is a source for pages that are almost free! A group of stamp collectors have gathered on the Internet to create album pages for every stamp ever issued. They have already created pages for almost all small countries, and most of the larger ones, such as France, Germany, the US and Canada. There are album pages for over 300 countries; over 25,000 pages in total! Visit my web site at www.albumpages.net for a complete list of the countries and time periods currently available.

Each set of pages contains spaces for every major Scott-listed stamp. The pages are designed to be printed on 8½ X 11 paper so they can be printed on an ordinary computer printer. Naturally, a laser printer will improve the appearance of the finished pages. If you want to print your pages on heavyweight, acid-free paper, I have it for \$10/hundred sheets. Send me an LSASE and I'll send you a sample page.

But I don't have an Internet connection!

You can still print the pages if you just have a PC or Mac with a CD-ROM drive and printer! I can supply all the pages on a CD, for only \$30! Just put the CD in your drive and start printing. All the software you need is included and can be automatically loaded on your system from the CD.

But I don't have a laser printer or even a PC!

Then let me print the pages for you! As the exclusive US distributor for printed StampAlbums.com pages, I am authorized to print any of the pages on heavyweight 8½ X 11 paper OR on paper which matches Scott International or Specialized pages in weight, color, and size (and has the holes in the right places).

I can print you pages for an entire country, a particular range of years, or even just the air mail or semi-postal issues! And the cost per page, including the paper, is just 20¢ per page for the 8½ X 11 and 25¢ per page for the International or Specialized-sized. Send me an LSASE and I'll send you the complete list of pages currently available. Sorry, pages and CD are available only to US addressees. Please add \$2 shipping for the CD, or \$2.95 shipping for any quantity of pages.

Richard Simpson
HC79 Box 52E, Romney, WV 26757
Rsimpson@141.com



ISWSC AUCTION #24

Closing April 27, 2002

Lot No.	Lot Description	Cat. Value	Min. Bid
1	USA #14 on cover, slightly ragged. 95 SCV \$250	250	25
2	USA 43 better and earlier with damage, mainly 19th century. Values to \$65 CV.		10
3	USA #73 Jackson F/VF close perfs two sides, lite cancel.	30	10
4	USA #149 F/VF	55	10
5	USA Selection of earlies, 268, 269, 272, 273, 274, 282, 284, 294, 295, 296, 297, 299. G-VF, some faults, nice group.	80+	16
6	USA 323-7 LA Purchase, U. 323, 4, 6, perfs cut. 325 F, SE, 327 VF.	82+	8
7	USA Selection of U F/VF stamps 303/370.	41+	10
8	USA #300 MNH F/VF	17.50	6
9	USA Kans.-Nebs Overprint accumulation. 662 U blk/4 HC, 664 blk/4 pre cancel (Hastings Neb), 664 U, 664 U HC, 666 Pre-Cancel (Independence Kans), 666 U perfined, 667 U pair, 668 U blk/4 pre-cancel (Manhattan Kans), 674 U blk/4 pre-cancel (??wman Grove, Neb),	460+	90
10	USA #750 Mint, clean nice copy of this SS.	30	12
11	USA MUH CE2 Plate block of 10 with center line number.		
12	USA Six early used, sound copies G-F, 285, 287, 289, 290, 323, 330. Cat \$118	118	35
13	USA 284 M&U in 2 APS retired Sales books. 93/2265, C9/JQ1. Mint incl 397, 511, 612, 644, Also 7 postal stationery covers, M&U. Net sales price \$207.05, CV much higher.		75
14	USA Minkus All-American album, 1954 slightly worn. 450 dif US. Damaged not counted, but incl some earlies w/minor faults. Incl 24, 46, 148, 219B, 221, 246, 248, 270, 302, 308-9, 489, 230-8. M incl 285, 294, 323, 537, 611, 614-5, 617-9, 620, 629, 647-8., 893, 909-21.		
15	USA 200 stamped envelope entires, incl air. Incl U9, U34(2). M incl U35(2), U350-1, U393. Many dies of types U92-3, U96-7. some dupes. Damaged no couted. Owner's est value \$30. HBO		
16	USA Q1-12 complete; JQ 1, 5; QE 23. SCV over \$175.	175+	25
17	USA Kans.-Nebs ovpts Kans. #658/667(no #661), 666 perfined, Nebs #669-679(no 672). some close perfs, most F/VF for issue.	311	60
18	USA 438 mixed Commems, + 79 regular issues, all used, on paper, w/postmarks. Variety, mostly 15-22¢ ranges.	100±	
19	USA Se-ten, 111 sets incl 1912-19, 3198-02, 313a, baseball legds, 1498-98, impressive accum. of difficult stamps to get.		20
20	USA Used 31 plate blocks, 7 zip & mail early, 114 coil, mostly line pairs, some PNC.		5
21	USA Used Blocks, 152 commems, 297 regular issues, 117 foreign.		10
22	USA Used, 91 plate number singles, 65 zip & mail early.		5
23	USA Mint 23 plate number singles, 72 zip & mail early, 1939 to present. \$15 face.		15
24	USA 80 US covers incl 4 of type A10, 10 type A25, 4 PO Philatelic Agency covers franked: 9 #657, 1 617, 3 #619, 3 #614, 2 #615, 1 #616, 8 #643; 2 pieces of confederate money. Great lot! Est Value \$75.		
25	USA Cover Lot. 35 US FDC's 690/1563; 18 cachet covers, 50 last day/rate change covers 2-25¢ (some are near last and first day). Est Value \$40.		
26	USA 18 FDC's #981 Minn Terr. Cent, 981 Wash & Lee Univ., 983 PR election, all cacheted, some w/ pencil addressing.		7.50
27	USA FDC's 20 covers w/ singles & blocks, circa 1948-64, all but 1 cacheted, some addressed in pencil.		12.50
28	US - Canal Zone Plate block of 8, C26 MUH. Scott Cat \$35	35	12
29	US & UN Shoe box w/ #10 envelopes, US & a few UN. Modern 60's-70's to date, interesting franking. 400± covers. HBO		17.50
30	USA 367/656, U, G-VF, 21 commems, 18 dif, 2 w/SE. 644 blk. Incl 372, 399, 401-3, 537.		4
31	Aitutaki On paper mix, 124 stamps, 1973-93 period. Commems, Regulars, others, some duplication.	54+	10
32	Aitutaki & Tonga. Ait: 148-151a, MNH. Tonga 392-6, C209-13, CO117-9, MNH. Jubilee issues.	77+	26
33	Albania/Bulgaria. Retired APS sales book, mostly mint, \$59+ left in book		30
34	Ascension. 85-88 VF, MNH high values.	43+	24
35	Asia. small countries, 74 diff postally U mainly recent (Bhutan 5, Nepal 15, Hong Kong 16, Bangladesh 4, Sri Lanka 34, many commem, + 10 postally U covers & cards from all but Bhutan.		19
36	Asia in 5 OMNI books, strong in Japan, china (PRC), also Korea, Thailand. Est cat about \$80.	80±	
37	Australia. Selection of 13 Early Roos. #6 U VF, 42 U F/VF, 45/50, 96/99 most F/VF couple of minor faults.	93	23
38	Australia. M&U 164/1270 several 100's mounted in album, plus about 6 oz of off paper Australia.		
39	Australia 5 pounds of on paper, mostly 1990's, mostly lite cancels, good pickings. HBO. (US shipping paid by seller)		25
40	Austria #46 U VF heavy cancel.	50	16
41	Bahamas & Barbados. M&U, small & large, Bahamas (50), Bardados (100).		12
42	Belgium 15 stamps 2/59 on ret approval sheet. sale prices cut in half for heavy cancels, some impers cut design. Some perfs cut. Incl 4, 6a, 12-13, 15, 26, 48, 59. OCV '98.	537	
43	Belgium Collection of 50 mostly U high values. 3, 7, 10, 11, 13, 16, 20, 21, 22, 24, 34-36, 45, 48, 51, 54, 71-72, 74-75, 255, B27, Q1, Q3, Q6. CV \$850	850	75
44	Brazil 16 covers Columbia Pictures to Mill River, MA. All opened by Brazil and/or US censors, some w/ additional markings.		
45	GB & Channel Islands and British Commonwealth around the world in 16 OMNI books. ++ variety and countries. + a couple of glassines w/misc. stamps and a M 1984 Australia olympics set. est cat over \$300.	300+	
46	British commonwealth. 1945-46 Peace Issue, MNH, Complete except no S. Africa or Swaziland. CD303	50±	
47	British Omnibus. 1935 Jubilees, 5 cpl sets. Bermuda, Leeward, St. Lucia, MH. Grenada, Trinidad are U.	29+	18
48	British Omnibus. 1978 coronation. 20 s/s, but each is 1/2 of orignal sheet, w/3 setenant stamps.		
49	Canada. Early dominion classics, 7 stamps, 29/43, 46, 47 mint (46 NG) G-VG. 98 Scott Cat \$450.	450	115