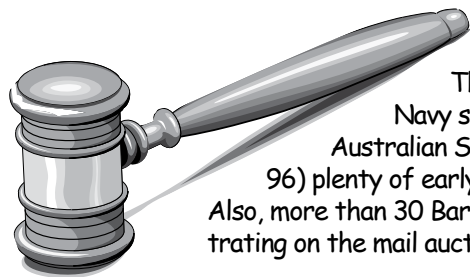


MAIL BID SALE #60 ~ TOO MANY HIGHLIGHTS!



I hope that you are all having a great summer! MBS #60's format has been altered to hopefully help you navigate more easily through the offerings. Be sure to let us know how you like it.

There are too many highlights to fairly describe them but here goes: U.S. Navy submarines (Lot 6), U.S. collection (Lot 9), Andorra (Lot 14A), several Australian States, Cape of Good Hope rarity, a huge German States collection (Lot 96) plenty of early GB and Italy, N. Korea S/Ss, Martinique collection and lots of packets. Also, more than 30 Bargain Bin lots at drastic reductions in price. I'm very happy to be concentrating on the mail auction again as my top priority.

Mike Crump, mail bid sale manager

SALE CLOSES OCT. 3, 2014

Lot #	Description	Closes Oct. 3, 2014	Minimum Bid
UNITED STATES			
1	#76, U, MC, perfs cut into frame LS. CV \$120.00		\$40.00
2	#233, 1893 Columbian, 4¢, U, MC, HH, HR, avg. centering. '12 CV \$9.00		\$2.00
3	#237, 1893 Columbian, 10¢, U, HC, a few blunt perfs, F/VF. '12 CV \$9.00		\$2.00
4	#290, Trans Mississippi 10¢, U, M/HC, one SE, F/VF. CV \$35.00		\$10.00
5	Imperfs: #754, 755, 756-765, cpl set and 771 (air post special delivery) imperf. Most with good margins, L/M cancels. CV \$17.45		\$4.00
6	Navy submarines, cpl booklet (in sleeve), MNH. Booklet pane, #3377a, of 5 is CV \$25.00. There's two panes in this booklet. '12 CV \$50.00		\$20.00
7	#O93, HC, off-center; perfs touch or penetrate design on 2 sides, corner pulled perf. CV \$50.00		\$15.00
8	RW12, hunting permit stamp (duck stamp), no signature cancel but has been roughly removed (from permit document?). There's a couple of flaws but can fill that space. '12 CV \$25.00		NMB
9	Loaded stamp album. A tough lot to describe. I thought I had seen it all until this arrived: a little 6" x 9" soft cover album (about an inch thick), copyrighted 1960 by Stamp and Album Co. of America, NYC. Meant as a starter album, the owner carried it to the extreme. <i>There is a lot of material</i> , many excellent values, packed into this album. Owner inserted his own clear plastic leaves between pages to protect the stamps. I counted 1300+ pieces, no duplication, ending at 1960, most hinged, some in mounts. 19 th century is mixed condition, approx 83 stamps, Columbians to 10¢. Examples: #114, 146, 147, 156, 158, 182, 183, 184, 205, 288, 298 and onwards. <i>Lots of collectable sound stamps</i> , the usual faults on some. Later, complete Prexies U, National Parks perf and imperf; 1940 famous Americans and almost everything forward to 1960. It doesn't end there. Lots and lots of BOB (to 1960): #C4, C5, many other airmails - I count about 60 - a good run of postage dues, all five parcel postage dues (JQ1-JQ5, CV \$82.50), Parcel Post (Q1-Q12, U, CV \$207.65); many revenue stamps, documentary stamps, proprietary stamps, wine stamps, etc. Questions? Call mail auction manager (562) 695-0104.		\$150.00
UNITED NATIONS			
10	#1-6 (New York), MNH; 19-20 (19 NG), MNH; 63-64, MNH; 104, MNH; 138, MH; C1-C4, M, LH. CV \$4.60		NMB
11	50 th Anniv. of UNICEF, 6 sheets of 8 stamps + label each: 2 for New York (#688-689), 2 for Geneva (294-295) and 2 for Vienna (210-211), fairy themes, MNH. Designs all from Walt Disney Co. Also, FD souvenir card depicting the 6 stamp designs. CV \$66.70		\$20.00
AFGHANISTAN			
12	Flowers, #1146-1152 plus 1153 S/S, CTO, cpl set. CV \$5.75		\$2.00
AITUTAKI			
13	#28, MH, HR, creases, F/VF. '12 CV \$4.00		NMB
ANDORRA			
14	(French Admin.) #178-180, 207-209, 214-216, MNH. CV \$13.60		\$6.00
14A	French (most) and Spanish admins. On Scott Pages. French Admin: 242 stamps, some airmails, postage dues, M and U, #1-231. Best: 6, 7, 8, 9, 10, 16, 33, 35, 37, 50, 58, 59, 64, 147-149, 151, 152, 157, 159, 160, 122, 123 and onwards. Some BOB including J1-J8, J13, J15, more. Spanish Admin: 26 stamps, #13//232. Total CV \$1278.00		\$125.00

Lot #	Description	Closes Oct. 3, 2014	Minimum Bid
ANTIGUA/BARBUDA			
15	Ameripex '86, American trains, #934-937, MNH; 1048-1051, 1988 Summer Olympics, MNH. Both sets complete. '12 CV \$15.00		\$6.00
AUSTRALIAN STATES/NEW SOUTH WALES			
16	23 U stamps with Scott # list: #42, 61 (x2), 77 (x2), 78 (x2), 80, 89, 95, 98, 99, 100, 102 (x2), 109 (x2), 110, 111 (x2), 112, 118, O25. CV \$66.55		\$10.00
AUSTRALIAN STATES/QUEENSLAND			
17	10 U stamps with Scott # list: #61, 85, 105, 113 (x2), 114 (X3), 131 (X2). Main value is #61, Moderate to Heavy Cancel, rough perfs (CV \$15.00). '12 CV \$22.50		\$3.00
AUSTRALIAN STATES/SOUTH AUSTRALIA			
18	13 U stamps with Scott # list: #57, 65, 66, 109 (perfin), 115, 116, 144, 145 (x3), 146, 147, O44. '12 CV \$38.05		\$5.00
AUSTRALIAN STATES/TASMANIA			
19	11 U stamps with Scott # list: #23, 61, 74, 88, 95, 96, 97, 103, 104 (x2), and another 103, MH. Biggest value here is 23, M to HC, ragged perfs (CV \$62.50). Total CV \$90.75. Priced according to condition.		\$10.00
AUSTRALIAN STATES/VICTORIA			
20	34 U stamps, some dup. Best: 149, 160 (x2), 172, 173, 193, 198, 201, 228. A few perfins. Scott # list included. '12 CV \$50.45		\$10.00
AUSTRALIAN STATES/WESTERN AUSTRALIA			
21	13 U stamps with Scott # list: #49, 62, 63 (x3), 73, 75, 76 (x3), 77, 90, 91. CV \$33.25		\$7.00
AUSTRALIA			
22	World weather watch. #431-433, U, LC, F/VF. CV \$7.25		\$2.50
AUSTRALIAN ANTARCTIC TERRITORY			
23	#L98-L101, set of 4, CTO. '12 CV \$8.15		\$3.00
AUSTRIA			
24	#350-353, 381, U, MC. CV \$6.00		\$2.00
25	#354-371, U. CV \$45.00		\$15.00
26	#592, MNH, F/VF; B3, MH, VF. CV \$18.70		\$6.00
27	Building types of 1957-61, MNH. #618a, 619, 622A, 623, 624, 626, 627, 627A, 628, 629, 629A, 630; also 611 U; C47-C49, C43, MNH. '12 CV \$17.10		\$5.00
28	MNH quality lot. #648B (x2), 648C, 713, 750-751, 788 (x2), 842 (x2), 881, 1022, 1053, 1202, B322 (x3), B324 (x2), B331-B334. CV \$9.65		\$4.50
29	#688-702, MNH, cpl set of 15. '12 CV \$12.15		\$6.00
30	Packet. #774, 1821C, 1836, 1873, 1875-1876, 1941, B341 mostly U. CV \$11.80		\$4.00
BAHAMAS			
31	Discovery of America/Columbus, set of 5 S/S, #644, 667, 692, 729, 753, MNH. ships, map on stamp, very attractive set. '12 CV \$49.50		\$15.00
BANGLADESH			
32	Approx. 40 U stamps, #63//402e. '12 CV \$20.75		\$6.00
BELGIUM			
33	#525, MNH, block of 4. CV \$6.40		\$2.00
34	MNH: #574-576, 984, 1624, 1692-1695. CV \$7.90		\$3.00
35	Packet of 42 U stamps with Scott # list. #1004//2137. '12 CV \$24.80		\$8.00
36	#1728-1732, cpl set, MNH, NATO 50 th Anniv. CV \$7.00		\$3.00
BERMUDA			
37	Packet of 23 U stamps with Scott # list. Looks like large stamps, #105//903, Tend to recent. CV \$18.60		\$6.00
BRAZIL			
38	#2308a (Olympics block of 3, #2306-2308 + label), MH (2 stamps hinged). '12 CV \$4.50		\$1.50
39	#2349-2350, M, LH, F/VF, 1992 Summer Olympics; 2416, Blk of 4, #a-d, MNH, F/VF; 2560-2561, U, F/VF. '12 CV \$18.00		\$5.00
BURKINA FASO (HAUTE VOLTA)			
40	#C192, S/S, CTO, UPU emblem & Telstar satellite. '12 CV \$1.90		NMB
BURMA			
41	Donated to club. Ret. omni book. 46 stamps, some early officials, mostly U, a few MH, #2//399. 1996 CV \$17.41. How low can you go?		NMB

Lot #	Description	Closes Oct. 3, 2014	Minimum Bid
CAMBODIA			
42	4 beautiful complete sets, MNH: #1175-1181, 1182 S/S, butterflies; 1224-1228, 1229 S/S, 1992 summer Olympics; 1295-1299, aircraft; 1326-1333, Hummel figurines. '12 CV \$36.25		\$14.00
CANADA/NEWFOUNDLAND			
43	13 U stamps with Scott # list: #83, 87, 106, 115-117, 131, 184, 191, 245-246, 269, 270. CV \$5.50		\$2.00
CANADA			
44	#96, MH, HR, F/VF (CV \$6); also, space filler bonus: #15, U, LC (sm. tear, face thin) - if sound, CV \$37.50		\$2.00
45	#108, 118, U, LC; Newfoundland, 149, U, LC, F/VF. CV \$6.45		\$2.00
46	#651, MNH, \$2 denom, F/VF. '12 CV \$4.75		\$1.50
47	Postage dues. #J28a, J31a, J32, J34a, J38, J40, MNH. CV \$2.75		NMB
CAPE OF GOOD HOPE			
48	#4, U, Moderate Cancel, F, clear margins. CV \$60.00		\$30.00
49	With APS Expert Committee report: "Scott No. 4e, unused, genuine, crease, thin, regummed." This is a beauty, good color, small thin, clear margins. CV \$900.00		\$250.00
CAYMAN ISLANDS			
50	#444-447, MNH, cpl set. '12 CV \$5.90		\$2.50
CENTRAL AFRICAN REPUBLIC			
51	5 CTO S/S, #322, 402, C144, C154, C199 (Rubens Art, Sir Rowland Hill, American Revolution, Wright Bros., Viking Spacecraft). One S/S has hinge marks. CV \$9.50		\$3.00
52	#J12a, U, pair, LC (CTO?).		NMB
CEYLON			
53	#3, U, LC, F/VF. '12 CV \$42.50		\$11.00
54	#4, U, LC, F. '12 CV \$72.50		\$19.00
55	#236, MNH; 237, MH; 238, MNH. These all look like Die 1 to me. '12 CV \$11.15		\$4.00
CHAD			
56	Packet of 59 U or CTO stamps. Looks like lots of large. #226//278, C32//C147, CB4. About half are airmails, with Scott # list. CV \$16.95		\$6.00
57	Antique Autos. #818-823, 824 S/S, MNH, cpl. Set. '12 CV \$19.00		\$9.00
58	Chad. Approx. 90 large stamps, CTO, colorful topicals. CV \$22.50		\$7.00
CHINA (PRC)			
59	16 stamps, U, with Scott # list. #69, 206, 574, 579-580, 582, 874-876, 878-882, 5L24, 5L29. CV \$6.75		\$2.00
60	#1405-1409, MNH, cpl set of 5. CV \$3.50		\$1.00
COMORO ISLANDS			
61	#774a, S/S of 2 stamps, MNH, Mozart and Elvis. CV \$8.75		\$4.00
COOK ISLANDS			
62	#216, MNH, F/VF, \$1 denom. '12 CV \$4.00		\$1.00
CUBA			
63	Early Group. #132, MH, off-center; 134, MH, F/VF; 135 (?), MH, off-center; 228a, MH, off-center, G/F; 231, MH, HR, G; 271, MH (rough perfs); 299-301, 303, MNH; C235, U, F/VF. CV \$69.35		\$20.00
64	#228, MH, partial gum, F; 230, M (?), NG, F; 283, U, LC, F/VF; 465, MNH, F/VF; (230 counted at U valuation). '12 CV \$16.55		\$5.00
65	Intact sheet of 25 stamps: #648 (x9), 649 (in 4 blocks of 4), MNH. Christmas 1960, see description in Scott. CV \$33.75		\$15.00
66	Sheet of 20 stamps plus 5 labels picturing bells and star. Stamps of type A249 arranged in blocks of 4. Type 248 stamps and labels for a cross in the sheet. Gorgeous colorful birds and Christmas sheet, MNH. CV \$50.00		\$20.00
67	#2457-2462, 2484-2493, CTO; RA6, block of 8, MNH. CV \$9.10		\$3.00
CYPRUS			
68	#3, M, NG, perfs cut frame on L.S. '12 CV \$3.25		NMB
CZECHOSLOVAKIA			
69	Donated to club. Packet of 223 mostly U common stamps, mostly post WWI to 1950s. Early issues dominate. Some duplicated. A few BOHEMIA AND MORAVIA . A great deal if you need 'em:		NMB

Lot #	Description	Closes Oct. 3, 2014	Minimum Bid
DENMARK			
70	#91, U, MC, F/VF. '12 CV \$7.75		\$2.00
71	#590, MNH; 591 S/S, MNH. '12 CV \$10.50		\$3.00
72	Mostly large recent (1990's-2000's). 83 U stamps in retired omni book. #696//1288. A good deal! CV \$41.55		\$8.00
73	4 packets covering the 1950's-60's (46 stamps), 1970's (25 stamps), 1980's (18), 1990's (13), U, larger stamps, with Scott # list. CV \$74.05		\$20.00
DOMINICAN REPUBLIC			
74	#1155, MNH, strip of 5, #a-e; 1156, MNH, strip of 5, #a-e. Independence anniv. CV \$20.75		\$7.00
EGYPT			
75	#616, U, MC, F/VF. High value of set. '12 CV \$3.00		NMB
ESTONIA			
76	#112, U, M/H cancel, F/VF; 138, U, MC, F/VF; 139, U, MC, F/VF; C1, U, tete-beche pair, good circular S-O-N cancel; C2, MH, tete-beche pair, some gum dist.; C5, U, tete-beche pair, good margins, circular S-O-N cancel; C14-C18, MH, set of 5; NB1-NB6, occupation semi-postals, MNH (one has NG), set of 6. CV \$117.50		\$25.00
77	#127, U, M to HC, F/VF; 131, U, MC, F/VF; 136, 137, M, NG, F/VF. CV \$14.85		\$4.00
78	#C3, U, moderate cancel, wide margins. '12 CV \$47.50		\$9.00
FALKLAND ISLANDS			
79	#81, 82, MLH; 97-98, MLH; 107, MLH; 128-130, MNH; 437-440, MNH, cpl set; 1L1-1L3, MLH. CV \$25.20		\$11.00
80	#128, 128a, 129, 130, MNH, F/VF. '12 CV \$9.35		\$3.50
81	#260-274 (Mail Ships), MNH, cpl set of 15. '12 CV \$24.50		\$8.00
82	#273, MNH, XF, 1 Pound denom., Mail Ship Nautilus. CV \$4.25		\$1.50
FALKLAND ISLAND DEPENDENCIES			
83	#1L23, 1L26, 1L27, MH, F/VF. '12 CV \$8.25		\$2.00
84	#1L38-1L52, MNH, cpl set of 15. Beautiful set. '14 CV \$14.40		\$4.00
FIJI			
85	168, MH, F/VF; 169, MNH, F/VF. '12 CV \$3.15		\$1.00

ABBREVIATIONS

& = And	DUP = Duplicate (s)	MNH or ** = Mint Never Hinged
+ = Plus	EST = Estimate (d)	NG = No Gum
// = Incomplete	F = Fine (off center, but perfs don't touch design)	NMB = No Minimum Bid
ADDR = Address (ed)	FD(C) = First Day (Cover)	OG = Original Gum
ANN = Anniversary	G = Good (perfs cut into design)	PNB = Plate Number Block
APPROX = Approximate (ly)	HBO = Held by Owner	RET = Retired, Returned
APS = American Philatelic Society	HC = Heavy Cancel	SE = Straight Edge
BKLT = Booklet	HH = Heavy Hinge	SON = Socked on the Nose
BLK = Block	HR = Hinge Remnant	S/S = Souvenir Sheet (s)
BOB = Back of Book	ID'd = Identified	TH = Thin
CAT = Catalogue (d)	INCL = Include (s) (ed)	U = Used
COMMEM = Commemorative (s)	LC = Light Cancel	UNADDR = Unaddressed
(IN)CPL = (In)Complete	LH = Light Hinge	VF = Very Fine (wide margins)
CTO = Cancelled to Order	M or * = Mint	VG = Very Good (perfs touch design)
CV = Catalog Value (latest Scott or year listed)	MC = Moderate Cancel	W/(O) = With(out)
DEFIN = Definitive (s)	MH = Mint Hinged	WMK = Watermark
DIFF = Different	MLH = Mint Lightly Hinged	XF = Extra Fine

Get the most out of your Society membership - participate in our many available programs.

Lot #	Description	Closes Oct. 3, 2014	Minimum Bid
FINLAND			
86	#376, Europe Issue of 1960, MH; also, see note in Scott: "A 30m gray similar to #376 was printed with simulated perfs in a non-valid souvenir sheet privately released in London for STAMPEX 1961." A MNH copy of that S/S is included in this lot. <i>Est. value \$5.90</i>		\$2.00
87	Packet of U stamps with Scott # list: #518, 522, 760, 762, 763, 764, 766, 767, 774-775, 782, 785, 786-789, 799-800, 806, 827-828, 874-875, a few others. <i>CV \$13.90</i>		\$5.00
88	25 U mostly newer stamps (2000's), a few older. Most are #1149A//1216. '05 <i>CV \$37.90</i>		\$7.50
89	#B39-B42, MLH, F/VF, cpl set. '12 <i>CV \$13.00</i>		\$3.50
FRANCE			
90	#804, MNH, F/VF. High value of set. '12 <i>CV \$10.50</i>		\$3.00
91	#B291, MLH, F/VF; B292, U, LC, F/VF; B347, B348, MH, F/VF. <i>CV \$28.50</i>		\$9.00
92	#B350-B355, MH, F/VF, cpl set of 6. '12 <i>CV \$18.50</i>		\$6.00
FRENCH POLYNESIA			
93	Hard to find: #191, 192, MNH. <i>CV \$19.50</i>		\$9.00
94	#677, U, LC, F/VF (corner crease). '12 <i>CV \$8.00</i>		\$1.00
FRENCH SOUTHERN & ANTARCTIC TERRITORY			
95	#13, 22, MNH. <i>CV \$13.00</i>		\$5.00
GERMANY/GERMAN STATES			
96	Impressive collection in Lighthouse hingeless album. Assembled by European collector. Album binder is in very fine condition. Notes in pencil on pages (Scott #'s and values). All German states represented, with most value in <i>Bavaria</i> (525 pcs., '07 <i>CV \$4332.00</i>); <i>Heligoland</i> (9 pcs, <i>CV \$1664.00</i>); <i>Thurn & Taxis</i> (62 pcs., <i>CV \$3980.00</i>); <i>Wurttemberg</i> (195 pcs., \$2989.00). Total 910 pieces, no dupes. APS expertized items (with certificates) include: <i>Bavaria</i> #14, U (<i>CV \$140.00</i>), #21, U (<i>CV \$90.00</i>); <i>North German Confederation</i> #26, U, pen cancel (<i>CV \$300.00</i>); <i>Thurn & Taxis</i> #28 (<i>CV \$1300.00</i>). It doesn't get much better than this. <i>Total '07 CV \$15,579.00</i> . This excellent collection will astound you with its overall condition and value. The owner could not bring himself to divide such a gem. Here's the bottom line: \$1.00 per stamp (less than 6 per cent of catalog value). Call for more particulars. This is a one-time offering, this mail auction only.	\$910.00	
GERMANY			
97	Donated to club. Mostly U group of good values w. Scott # list. 20 stamps. Best: #678, 685, 686, 690*, 691. Most others more than \$1.00 <i>CV. '12 CV \$55.00+</i> Incredible!		NMB
98	#567, U, LC, F/VF; 724, U, L to MC, F/VF. '12 <i>CV \$7.50</i>		\$2.00
99	20 U stamps + 2 S/S in dealer cards and ID'd. #857=860. 919-925, 1022-1027, 1137-1138, 1140; 1007 S/S of 3; 1145 S/S, MNH. <i>CV \$9.20</i>		\$3.00
100	13 large U stamps: #1778, 1798, 1804, 1832, 1851, 1857, 1859, 1871, 1942, 1963, 1978, 2002, 2021. <i>CV \$19.80</i>		\$6.00
GERMANY/BERLIN			
101	Donated to club. Retired omni book. 9 U: #9N51, 9N58, 9N63, 9N102, 9N109, 9N131, 9N134, 9N141, 9N169. '07 <i>CV \$44.35</i> Wow!		NMB
GERMANY/DDR			
102	#243a S/S, 241-243 imperf. Has a couple of paper adhesions, some gum disturbance and an ink mark all on gum side. Still, a nice price. <i>CV \$24.00</i>		\$4.00
103	#478a, se-tenant with DEBRIA label, MNH, but not as described in Scott. Part of a sheet of 6 stamps with 4 DEBRIA labels between the 3 vert. pairs. <i>CV \$4.30</i>		\$2.00
104	#2000 MNH, sheet of 2; 2063-2065, 2066 S/S, 2119-2121, 2121 S/S, 2265-2268, 2271 S/S, 2647-2650, 2651 S/S, 2655 S/S, 2662 S/S, 2667, B189. <i>CV \$22.80</i>		\$10.00
105	MNH. #2349-2354. 2364-2368, 2373-2376, 2383 (sheet of 4), 2447-2450, 2456-2459, 2528-2531a block, 2538-2541, 2542-2545, 2546-2549, 2550 S/S, 2555-2558, 2555a mini sheet of 4, 2556a mini sheet of 4, 2560. Whew! <i>CV \$33.55</i>		\$14.00
GHANA			
106	First all Africa trade fair (1972), Five imperf MNH blocks of 4, #440-444, "Belgica 72" overprints. <i>CV \$32.00</i>		\$12.00
GOLD COAST			
107	#115-117, 119, U, LC; Ifni, 59, 74, 80, 82-83, 84-85, 88, 89, MH; Jordan, 473-474, M, LH. <i>CV \$6.10</i>		\$2.00

Lot #	Description	Closes Oct. 3, 2014	Minimum Bid
GREAT BRITAIN/GUERNSEY			
108	#367-371, MNH, VF, cpl set, golden Era of Shipping - Clipper Ships; 445, MNH, sheet of 12 different winter birds. Beautiful! CV \$9.80		\$3.50
GREAT BRITAIN/JERSEY			
109	#406-410, MNH, VF, cpl set (Paintings); 549-552, MNH, VF, cpl set (Churches). '12 CV \$9.55		\$3.00
GREAT BRITAIN			
110	#108, U (oval with bars and "198" cancel), HC, F/VF, HR. Here's a great bargain. '12 CV \$220.00		\$30.00
111	#129, U, M to HC (needs to be soaked). CV \$22.50		\$5.00
112	#129, U, F/VF, Moderate to Heavy cancel. '12 CV \$22.50		\$4.00
113	#131, U, MC, F/VF; 143, HC, paper adhesions (needs soaking); 144, HC, F/VF; 149, MC, F/VF. CV \$48.25		\$9.00
114	#133, MH, HR, VF. '12 CV \$57.50		\$15.00
115	#136, U, HC, VF. CV \$70.00		\$15.00
116	#138, U, HC, F/VF. '12 CV \$40.00		\$8.00
117	#138a (scarlet & dark green), U, MC, F/VF. '12 CV \$70.00		\$14.00
118	#139a, Heavy circular "London" cancel, creases. Valuable stamp at a great price. '12 CV \$175.00		\$30.00
119	#151, U, pen cancel, F/VF; 154, MC, F/VF; 193, HC, F/VF; 200, MC, F/VF. '12 CV \$14.25		\$2.50
120	#155, U, M to HC, HR, F/VF. '12 CV \$45.00		\$9.00
121	#160, strip of 3 (one MH, two MNH); 1392, MNH; 1548-1552, MNH. CV \$8.20		\$3.00
122	#166, M, NG (CV as U); 192, MH, F/VF (sl. thin); 198, U, MC, F/VF; 210a, U, MC, F/VF; 219, U, HC, F/VF; also, 218, U, close-clipped bottom, space filler (not in CV). CV \$28.00		\$7.00
123	#171, U, HR, F/VF. Looks like some kind of crayon cancel (?). '12 CV \$22.50		\$3.99
124	Donated to club. #179, 180, U, MC, both perfins. Extraordinary CV - OK, maybe GB is over-valued, but really! CV \$200.00. Where have you ever seen this?!		NMB
125	#200, U, MC, F/VF; 207, MC, F/VF; 285, MNH, F/VF, 301, MC, F/VF; 303, MC, F/VF (needs to be soaked); 307, MC, F/VF; 308, MC, F/VF; 332, MC, F/VF; 333, HC, F/VF. '12 CV \$31.30		\$6.00
126	#208, U, MC, F/VF. CV \$11.00		\$2.00
127	#313-316, MH, cpl set of 4. '12 CV \$18.20		\$5.00
128	#363, MNH, vert. pair; 368p, MNH, vert. pair; 374 U, HC, VF; 377-378, MLH, F/VF; 381, U, LC, F/VF. '12 CV \$29.20		\$7.00
129	#381, U, LC; 401, U, MC; 417, U, LC (high value of set); 436, MNH, F/VF; 437, MNH, F/VF. '12 CV \$12.50		\$2.50
130	#298, MNH, block of 12; 758, MNH, gutter block of 4. Also, VIRGIN ISLANDS 143, MNH, block of 4, Shakespeare. CV \$6.30		\$3.00
131	All large stamps. #1066a, MNH, strip of 5 (1062-1066) (2 folds); 1230, U, circ. "London SW" cancel; 1287, U, LC; 1881, U, MC; 1882, U, pen cancel (not counted in CV); 1932, U, MC; 1933, U, MC; 1966, U, MC; 1968a, U, LC; 2006, U, MC. '12 CV \$17.10		\$3.50
132	Little group of U Machin heads. #MH118, MH147, MH151, MH154; also, MH143**; SMH21, SMH65, WMMH60, U. '12 CV \$13.10		\$2.50
133	Odds and ends: #BK127, booklet, MNH; O4, U, M to HC, F/VF; British offices abroad (Tangier), 582, MNH, F/VF. '12 CV \$8.25		NMB
GREECE			
134	Small packet of MNH: #469-471, 820, 823, 835, 1062, 1065, 1097, 1172, 1292. CV \$3.65		NMB
135	Ret. omni book, approx 106 U stamps, mostly large, dups. #484//1040. Fill a lot of spaces. '01 CV \$24.00		\$5.00
136	#2020, U, MC, F/VF (booklet stamps, see note in Scott). '12 CV \$6.00		NMB
GRENADA			
137	#1342-1345, MNH. Also, GUATEMALA , C4, MNH. CV \$5.90		\$2.00
138	#3725, S/S, MNH, 40 th Anniv. First Man on Moon. CV \$9.00		\$4.00
GUINEA			
139	Old locomotives. #1354-1359, CTO, cpl set. '12 CV \$4.80		\$1.00
HONG KONG			
140	#151, MH, F/VF. CV \$4.00		\$1.00
ICELAND			
141	#28, U, MC, off-center to right (perfs do not touch frame) '12 CV \$42.50		\$10.00

Lot #	Description	Closes Oct. 3, 2014	Minimum Bid
IFNI			
142	38 stamps, mostly MNH, a couple MH, in 102 cards, all ID'd: #2, 54, 61-62, 72-73, 78-79, 80, 86-87, 88, 107-108; B13-B14, B17-B18 (x2), B23-B24, B25-B26, B27-B28, B31, B33, B34, B38-B40, B41-B42, B43, B46-B47, B51. CV \$20.75		\$6.00
INDIA			
143	#218, MNH, XF (has a sm. paper adhesion). '12 CV \$22.50 Nice price!		\$5.00
144	#882, 883, 884, MNH, VF. '12 CV \$4.85		\$1.50
145	#1062-1064, MNH (short set); 1079, U, LC, Indira Gandhi. '12 CV \$8.60		\$3.00
INDONESIA			
146	Complete sets: #465-467, MNH; 468-472, MNH; 616-625, MNH; 687-694, MNH; 739, MNH; B203-B206, MNH; B207-B210, MNH. '12 CV \$11.35		\$5.00
IRAQ			
147	U Officials: #O222, MC, F/VF; O313, LC, F/VF. '12 CV \$5.50		\$2.00
ITALY			
148	15 Classics, U. #24, 52, 68, 69, 74, 77, 78, 87, 92 (x2), 93, 94, 95, 100, 104, Q3. CV \$36.90		\$5.00
149	Six Classics. #34, U, MC, F/VF; 70, U, MC, F/VF; 75, U, F/VF, HR (old paper hinge); 82, MH, F; 90, U, M to HC, F; 113, MH, off-center, dist. gum. '12 CV \$34.35		\$7.00
150	#55, U, off-set to left, M to H Cancel. '12 CV \$47.50		\$9.00
151	#60, MH, HR, F/VF. Good looking valuable stamp from 1890, "35c" written on back side in ink. '12 CV \$65.00. Priced competitively.		\$15.00
152	#62, MH, F/VF. '12 CV \$55.00		\$15.00
153	#93, MH, F/VF. '12 CV \$80.00		\$24.00
154	#181a, VF, might be hinged---I'll value it as MH; C23, MLH, VF. '12 CV \$36.00		\$12.00
155	10 U stamps from the 1920's-30's. #204, F, MC; 228, M to HC, F/VF; 268, circular HC "Catanzoro", F/VF; 269, HC, circ. Cancel, F/VF; 270, MC, F/VF; 271, circular cancel "S. Pietro"; 272, MC, F/VF; 273, MC, F/VF; 274, M to HC, F/VF; 275, M to HC, F/VF. Also, (not included in CV) #201, rough perfs at top, space filler. 12 CV \$26.10		\$6.00
156	\$549-567 (19 diff.) of 1950 issue. CV \$7.90		\$3.00
157	Packet of 270 U stamps, 50-50 large and small. Common stamps, dupes, need to be sorted and cataloged. A few Socialist Republic, five Italian Somalia. Hey!		NMB
158	Donated to Club. Ret. Omni Book. Believe it or not, these are recent stamps, valued with '07 Scott. #1948//2138, with many Mint. This may be the bargain of this sale. 87 stamps - if you won't buy this one I will! '07 CV \$95.85		NMB
IVORY COAST			
159	21 large colorful stamps, CTO, w. Scott # list. #421-425, 440-441, 514-518, 585-588, 600-604. CV \$14.75		\$4.00
JAPAN			
160	#92, U, LC, F/VF; 513, MNH, F/VF. CV \$7.75		\$3.00
161	Early U: #92, 95, 99, 117, 122, 127, 128, 129, 130, 131, 132, 133, 136, 137, 139, 140, 141, 145, 157. '12 CV \$34.40		\$4.00
162	#569-570, 572, MNH; 749, MNH; B7, MNH, Pearl Harbor under Japanese attack. CV \$31.50		\$14.00
163	#1544, MNH, S/S of 3 Endangered Birds, XF. '12 CV \$3.50		\$1.00
164	Packet of 11 large U stamps. #1707, 2165, 2166, 2226, 2425, 2460, 2503, 2527, 2590, 2596, 2899. CV \$5.10		\$2.00
165	Recent, U: #2415, 2968, 3181, 3189, 3342F (x2). CV \$6.30		\$2.00
166	#C39-C42, MNH, cpl set of 4 (C41 has crease). '12 CV \$41.50		\$14.00
167	Packet of 210 stamps, U, mostly defins, not much dup. 1920's-30's. Many great stamps.		\$5.00
168	41 U stamps, too new for Scott '13 Cat. Should have good value, large stamps, several Disney themes. Valued at 15¢ each is \$6.15 total. Here's a deal!		\$2.00
KENYA, UGANDA AND TANGANYIKA			
169	Little booklet of 20 stamps, MNH: #121 (x4), 122 (x4), 123 (x4), 125 (x4), 127 (x4). Not listed as booklet in Scott (values listed as booklet panes. '12 CV \$6.35		\$3.00
KOREA			
170	Two MNH S/S. #628a, 629a. CV \$15.00		\$7.00
171.	#668-671, MLH, cpl set; also, same stamps as mini S/S, imperf, MNH, 668a-671a, 12 CV \$30.25		\$15.00

Lot #	Description	Closes Oct. 3, 2014	Minimum Bid
KOREA (DPR)			
172	14 souvenir sheets from the hermit kingdom, various subjects (birds, Rembrandt, tigers, space, soccer, Saturn, Pyongyang, etc.). #1436, 1519, 2021, 2100, 2187, 2198, 2450, 2840, 3204, 3213a, 3214a, 3486, 3555, 3569, CTO. A rare opportunity. '12 CV \$35.00		\$10.00
173	Space exploration: #2197, sheet of 3 + label; 2198, S/S; soccer world cup, 2227, S/S, MNH. CV \$18.00		\$8.00
KUWAIT			
174	#89-92, MNH, cpl set of 4, F/Vf. '12 CV \$7.00		\$2.50
LAOS			
175	12 MH stamps: #1, 3, 6, 7, 8, 9, 18, 20, 21, 41, 42, 43. CV \$10.90		NMB
176	Beautiful MNH complete sets: #758-764 + 765 S/S, 1988 Calgary Olympics; 781-787, space flights; C103, Lions Club; 842-847 + 848 S/S, Olympics; 883-889, 889A S/S 1988 Seoul Olympics. '12 CV \$25.35		\$10.00
LEBANON			
177	#148-149, MH, VF. CV \$20.00		\$10.00
178	#C9-C12, MH, F/VF, set of 4. '12 CV \$18.00		\$6.00
LIBERIA			
179	U.S. Presidents, 3 MNH mini-sheets, 14 stamps each + label, Washington through Clinton, #2568p. Very pretty. CV \$26.00		\$10.00
LIBYA			
180	Early sailing ships. #1090-1095, MNH, cpl set of 6. '12 CV \$12.00		\$5.00
LIECHTENSTEIN			
181	#B14, S/S, postal museum issue of 1936, LH in 3 spots, imperf (has 5mm long tear). '14 CV \$17.50		\$3.00
LITHUANIA			
182	#272-277B, MNH, cpl set of 8, perf 14. A couple have gum disturbance. '12 CV \$35.40		\$10.00
LUXEMBOURG			
183	MNH: #376-378, 384-385, 447-459, 466-486; defins 265, 423, 426, 429. Lots of stamps and sets. CV \$21.40		\$9.00
184	MNH: #485-493, 495-499, 503-515, 519-529, 533//538 (short set), 565-568, 643, 650 sheet of 3, 697, 707. CV \$24.50		\$10.00
MALI			
185	Colorful birds. #273-277, MNH, cpl set of 5. '14 CV \$5.70		\$2.00
MALTA			
186	6 large U stamps: #209, 594, 633, 811, 819, 820. CV \$2.00		NMB
MARSHALL ISLANDS			
187	#142, S/S, MNH, also on FDC (6/15/87) issued for CAPEX '87, Amelia Earhart flight map (#142 S/S). Perfect and beautiful cachet. CV \$6.00		\$3.00
MARTINIQUE			
187A	Collection mounted on Scott pages, many in mounts. Approx 270 stamps with Scott # list and values. #1//233. Some BOB included. Many valuable early issues. Lots of M, some U. Call for questions. Best: #1, 5, 8, 12, 13, 14, 16, 18, 20, 28, 31, 32, 40, 43, 45, 47, 48, 49, 50, 51, 56, 57, 58, 59, 60, 61, 62, 133-172 all M. CV \$2039.00		\$200.00
MAURITIUS			
188	Packet of 52 diff large colorful stamps, U. <i>Owner values them at 25 cents each (\$13.00).</i>		\$4.00
MONACO			
189	#340-348, (347 x2), MH; 350-352, U. CV \$7.40		\$3.00
190	Packet of 87 stamps. Looks like 1950's mostly. 70%/30% MH to U. More large than small. Can't beat the price!		NMB
NETHERLANDS			
191	U group: #17, 34-37, 74-81. CV \$16.50		\$4.00
192	Mint group: #383-384, MH, cpl set; 413-414, MLH, cpl set; 431, MLH; 435, MNH; 608, MNH. CV \$9.35		\$4.00
193	Semi-postals, approx 34 U. #B82//B212. CV \$15.80		\$5.00
194	32 NETHERLANDS and 16 NETHERLANDS INDIES stamps. Neth. are mostly semi-postals. U. CV \$21.65		\$5.00

Lot #	Description	Closes Oct. 3, 2014	Minimum Bid
NETHERLANDS (CONTINUED)			
195	Packet of approx 177 U stamps, 60% small, 40% large, with Scott # list, #23//416 plus others not cataloged. <i>Owner has value at \$56.05.</i>		\$10.00
196	Donated to club. Packet of 200+ U, common stamps, some dup. 1920s-50s. Cataloger's delight. My observation: 65% defins. Plenty of fun here!		NMB
NEW CALEDONIA			
197	High value of early set. #87, MH, HR. CV \$9.00		\$4.00
NEW HEBRIDES (FRENCH)			
198	MNH sets: #139-142, 143-145, 149-150. U: 139-142, set. CV \$28.55		\$12.00
NEW HEBRIDES (BRITISH)			
199	MNH: #123-126, set; 127-129, set; 130-131, 135-137 set. Also, U set, 123-126. CV \$7.05		\$2.50
NEW ZEALAND			
200	#280-284, MH, F/VF, set. '12 CV \$5.25		\$1.50
201	#301, U, MC, corner crease, pulled perf. High value (10 shillings) of set. Not perfect but priced accordingly. '12 CV \$20.00		\$2.00
202	Boy, these are attractive lots. All MNH: #355, 358, 359, 414 block of 4, 515, 528-531 set, 626-629 set, 635-638 set, 791-794 set, 794a S/S of 4, 799-802 set; defins 591, 761-765. CV \$19.85		\$9.00
203	#496-499, MLH, F/VF, cpl set. '12 CV \$5.25		\$1.50
204	All MNH: #843a-e (strip of 5 in block of 20 stamps); 857-860 set, 861-866 set, 867-870 set, 872-875 set, 876-879 set. CV \$26.40		\$11.00
205	MNH. #B75a, B76a, Mini sheets of 6 stamps each. Pristine stamps. '12 CV \$20.00		\$8.00
206	A rare official. #O69, U, LC, off-center to left, pulled corner perf. OK, so it's not perfect, but the price is! '12 CV \$45.00		\$5.50
207	Donated to club. Packet of 150 mostly U stamps, early to the 1950s, 50/50 large/smaller. Nothing dazzling, few dups.		NMB
NIUE			
208	MNH. #214-218, cpl set; also 218a, S/S of 5 + label. '12 CV \$9.50		\$4.00
NORWAY			
209	#22, U, moderate cancel, F/VF (blunt corner); 27, U, MC, F/VF. CV \$26.50		\$7.00
210	#181-183, MH, F/VF, cpl set; 268, MNH, VF. CV \$11.75		\$3.00
NYASSA			
211	#51-62, MH, F/VF, cpl set. '12 CV \$18.50		\$6.50
PAKISTAN			
212	High value of set (25 Rupees). #19, U, LC, F/VF. '12 CV \$77.50		\$15.00
213	#408, 409, MNH, F/VF. American Bicentennial. '12 CV \$6.00		\$2.00
214	The two highest values from this set: #20, 21, MNH. '12 CV \$14.75		\$5.00
PALAU			
215	Seashells. #108a (strip of 5, 104-108); 154a (strip of 5, 150-154). '12 CV \$6.25		\$2.00
PANAMA			
216	Brussels Worlds Fair (1958), #C209a, S/S of 7 stamps, (#418-421, C207-C209) MNH. '12 CV \$5.25		\$1.50
217	#C202a, imperf, S/S of 4 stamps, MNH. CV \$5.25. Bonus: CANAL ZONE , J21, U.		\$2.00
PAPUA NEW GUINEA			
218	#118-121 set (MLH). MNH: 228-231 set, 241-244 set, 245//248 (short set), 284-286 set, 287-290 set, 291A, 292 pair, 293-296 set, 297-300 set. CV \$18.15		\$7.50
219	Packet of 149 U stamps, large and colorful and lots of fun! CV \$62.00		\$12.00
PARAGUAY			
220	1961 Europa issue, #627a, S/S of 5 (623-627), has a crease and about a ¼-inch tear - a bit "handled." Still, a great price. '12 CV \$21.00		\$4.00
221	Winter Olympics Innsbruck, 1976, strip of 7, CTO (not described in Scott in this format), #1596-1598; U.S. and USPS Bicentennial 1664-1670 strip of 7, CTO, (missing 1671); space exploration, 1713a-g, strip of 7, CTO; 1980 world chess championship, 1982a-g, strip of 7, CTO. All large and colorful stamps. CV \$21.25		\$5.00
PHILIPPINES			
222	Philippines. #515, S/S, MH; 557-559, MNH; 578-579, MNH, cpl set; 1379-1384, CTO, cpl set, 1447-1448, MNH, cpl set. CV \$13.05		\$6.00

Lot #	Description	Closes Oct. 3, 2014	Minimum Bid
PHILIPPINES (CONTINUED)			
223	#578-579, MNH. CV \$2.40		NMB
POLAND			
224	Poland. Dealer's lot? Two issues, #2536 and 2537, (50 copies each). High values. CV \$135.00		\$20.00
RHODESIA			
225	Rhodesia (British South Africa Company). #77, MH, HR, F/VF; 78, MH, HR, F/VF, Victoria Falls issue. '12 CV \$42.00		\$12.00
ROMANIA			
226	Romania. MNH: #628-631, B340; also 628-631, B34 imperf; 1474, 1500(x2), 2099-2102 set, 2164, 2186 2187, 2189, B237 S/S of 3, B238 S/S of 3 Imperf, B381-B383 (CTO), B387 imperf. Also, CTO/U: 1016-1018 set, 1159-1160, 1280 S/S imperf. CV \$32.25		\$12.00
RUSSIA			
227	MNH Blocks of 4: #3153, 4592, 4594, 5994, 5997, 5998. '12 CV \$11.80		\$5.00
228	1992 Winter Olympics. 3 souvenir sheets of 8 stamps each, MNH: #6056a, 6057a, 6058a. '12 CV \$11.00		\$3.50
229	#6083a, MNH, Block of 4 (6080-6083), Space Accomplishments. '12 CV \$3.50		\$1.00
230	Donated to club. Packet of 185+ stamps, U and CTO, to 1960, large and small, not many dupes.		NMB
ST. HELENA			
231	#580-583, MNH, VF, Christmas 1992, cpl set. '12 CV \$9.95		\$3.00
ST. KITTS			
232	#253, S/S, MNH, PHILEXFRANCE '89, French Revolution. Gorgeous! '12 CV \$5.00		\$2.00
ST. PIERRE & MIQUELON			
233	#447, MH, F/VF, American Bicentennial, George Washington and Lafayette. '12 CV \$7.00		\$2.00
ST. VINCENT GRENADINES/BEQUIA			
234	Locomotive type of 1985, se-tenant pairs, #a-b: 1, 8, 15, 22, 25, 28, 29, 32. MNH CV \$7.15		\$2.00
235	Auto Type of 1983, se-tenant pairs, #a-b: #86, 99, 114, 115, 117, 119, 122, 126, MNH. CV \$6.15		\$2.00
236	1984 summer Olympics, pairs, #a-b, MNH: #171-173 (short set); Queen Mother type of 1985, pairs, #a-b" 207-209 (short set). CV \$5.75		\$2.00
SAMOA			
237	#57-59, MH, HH, F/VF; 207, MNH, F/VF. '12 CV \$10.50		\$3.00
238	MNH: #294 (x3) overprint, 300-303 set, 315-316, 325-328 set, 357-360 (x2) set, 619 mini sheet, 704a S/S (x2), C#-C6; also, CTO, 721-724 Set. CV \$28.90		\$10.00
239	#862-865, MNH set of 4. '12 CV \$8.25		\$3.00
SAN MARINO			
240	9 MNH complete sets: #564-568, 594-603, 627-632, 643-652, 654-660, 665-670, 703-709, 758-767, 804-813. CV \$18.25		\$8.00
241	#C34-C37, MH; J65-J70, MH. CV \$2.70		NMB
SAUDI ARABIA			
242	#98, 99, 101, 103, MH. CV \$31.50		\$15.00
SIERRA LEONE			
243	1990 complete MNH set of Mars exploration. Scott notes: "Extreme speculation has occurred with this issue, centered around #1171, the face on Mars stamp." The set includes 4 mini sheets of 9 stamps each, #1167-1170, and the 2 S/S, 1171, 1171A. '12 CV \$112.00. Own this complete set!		\$33.00
SOLOMON ISLANDS			
244	#161, MH, F/VF. '12 CV \$2.75		NMB
245	MNH: #475-476 sheet of 8 + labels.; 530-533; booklet pane of 2 each 531-532; 534 S/S, available in booklet form only. CV \$17.20		\$8.00
SOUTH ARABIA/KATHIRI STATE OF SEIYUN, OTHERS			
246	9 souvenir sheets, MNH. I didn't find these in Scott. Nevertheless, they are attractive (Cinderellas?). Centenary of ITU, 1968 Olympics, Spanish riding school, Gauguin, Boy Scout jamboree 1967, others, all different. Est. Value \$39.00		\$4.50
SOUTH WEST AFRICA			
247	#244-248, MH, complete set of 5. '12 CV \$4.65		\$1.50

Lot #	Description	Closes Oct. 3, 2014	Minimum Bid
SPAIN			
248	Back of the Book? Well, probably not in Scott. Labels, Cinderellas, charity seals, pro beneficia, provincials (Cadiz, Bilbao, Malaga, Mallorca, Seville, etc.). Packet of 190 mostly U (or CTO), few dupes, hinged, some HR, from 1930's-1940's era. I'm no expert on Spain but this has to be an interesting study area. <i>Value unknown.</i>		NMB
SPANISH MOROCCO/TANGIER			
249	#LB4-LB6, MH, F/VF. CV \$6.25		\$3.00
SRI LANKA			
250	#613, U, LC, F/VF; 617, U, MC, F/VF; 729, U, MC, F/VF. '12 CV \$10.90		\$3.00
SUDAN			
251	#O28, U, HC. '12 CV \$4.50		NMB
SWAZILAND			
252	#382-384, MNH, cpl set, royal wedding issue. (All of these have margin attached, margin pieces hinged). '12 CV \$2.10		NMB
SWEDEN			
253	Ret. Omni pages, older U, 19 stamps: #11, 29, 31, 35, 38, 42, 54, 91, 101, 187, 188, 359, B22, B26, J14, J21, O12, O19, O24. Lots of value. '05 CV \$56.70		\$11.00
254	Complete MNH booklet, #1035a. CV \$11.00		\$4.00
SWITZERLAND			
255	#95a, MH, off-center, Wmk 182, 11.5 x 12 perf. '12 CV \$50.00		\$10.00
256	#190-192, U, cpl set of 3. '12 CV \$13.75		\$3.50
257	#205, U, MC, F/VF; 206, U, MC, F/VF; 252, U, MC, F/VF, pulled corner perf, (not included in CV). '12 CV \$16.00		\$4.00
258	3 blocks, all MNH: #228, block of 8 with 2 stamps separated from the other six by a gutter marked to aid vending machines; 329a, 2 pairs separated by a gutter marked to aid vending machines; 33a, 2 pairs separated by a gutter etc. CV \$7.30		\$3.00
259	#340-343, MNH, cpl set; 558-562, 564-568, 572, 574, 575, MNH; 585, sheet of 4, MNH. '12 CV \$31.90		\$10.00
260	#579, MNH, F/VF, high value of set. CV \$8.75		\$2.50
261	#B61-B64, cpl set, U, F/VF, (B63 has pulled corner, not inclu. In CV); B65-B68, U, cpl set. CV \$26.10		\$6.50
262	#B154-B157, MNH, cpl set. CV \$9.50		\$3.00
263	Two U singles that are the high values of their respective sets: #B157 and B165, both with MC, F/VF. '12 CV \$18.50		\$5.00
264	Butterflies. #B267-B271, U, cpl set of 5, L to MC, F/VF; B277-B281, MH, cpl set of 5, F/VF, flowers. CV \$14.15		\$4.00
265	#B282-B286, U, MC, F/VF, cpl set of 5; B370-B373, M, blocks of 4, (only partial gum on these - manufacturing defect?). Native animals. CV \$14.50		\$4.50
266	#B463-B466, MNH, F/VF (B463 has an abrasion upper RH corner), cpl set; B467-B470, MNH, F/VF; C46, MNH. CV \$13.80		\$4.00
267	#C3, MH, HR, pulled corner perf; C\$ U, MC, F/VF; C5, MH, HR, F/VF. '12 CV \$16.00		\$5.00
268	#C9, U, MC, F/VF. CV \$17.00		\$6.00
269	#C12, U, MC, F/VF, (rough perfs LS). CV \$42.50		\$10.00
270	U group: #S1-S4, S11-S12, S14-S15. CV \$13.70		\$4.00
THAILAND			
271	14 mostly large U stamps from the mid-1990's; Yugoslavia, 20 U stamps, #1-5, 7-8, 10, 22, 31, 3L2, 3L19, 3L43, 3L44, 3L46, 3447-3452. CV \$7.10		\$2.00
TOGO			
272	#B12a, B13a, B14a (S/S's of 4), hinge marks on corners of margins. CV \$15.00		\$5.00
TOKELAU			
273	#320-321, MNH. Queen Elizabeth. CV \$10.00		\$5.00
TURKEY			
274	#469, MNH, a bit off-center, crease. '14 CV \$45.00		\$15.00
275	#1442-1460, complete set of definitives, MH. CV \$49.45		\$20.00
TURKMENISTAN			
276	Turkmenistan. Colorful map-on-souvenir sheet, #51, MNH. CV \$5.00		\$2.00
TURKS & CAICOS ISLANDS			
277	Turks & Caicos Islands. #1180-1183, MNH, cpl set of 4. '12 CV \$9.00		\$3.00

Lot #	Description	Closes Oct. 3, 2014	Minimum Bid
UGANDA			
278	#104, MH, F/VF. '12 CV \$2.75		NMB
VATICAN CITY			
279	#707-709, strip of 3, U, nicely canceled. CV \$3.50		\$1.00
VENEZUELA			
280	#1554, U, L to MC, F/VF. '12 CV \$2.25		NMB
VIETNAM (DEMOCRATIC REPUBLIC)			
281	Two early issues: #164-165, set of 2, MNH, VF; 177-178, set of 2, MNH, VF. '12 CV \$19.50		\$8.00
282	#174-175, MNH; 235-237, Imperf, cpl set. CV \$20.00		\$10.00
283	Antique Cars. #1446-1449, CTO; also motorcycles, 1516-1519, CTO. CV \$5.60		\$2.00
WALLIS & FUTUNA ISLANDS			
284	MNH: #123-124, 153, 158 (map-on-stamp), C82. CV \$25.75		\$10.00
285	MLH; #159-162 (short set), C16. U: 156, 168, 171, 224, 226, C31, C33. CV \$45.35		\$20.00
YUGOSLAVIA			
286	Yugoslavia. Donated to club. Packet of 325 U stamps, removed from album, some HR, some dups, common stamps, mostly from 1920's-50's, some CROATIA, SLOVENIA, THRACE.		NMB
ZAIRE			
287	Native handicrafts. #1615-1620, MNH, cpl set of 6. '12 CV \$13.00		\$6.00
WORLDWIDE			
288	"A-B" countries. ADEN , #55a, MH, F/VF; ASCENSION , 63, MH, F/VF; BELGIAN CONGO , 253, U, LC, F/VF. '12 CV \$4.15		NMB
289	"B" countries. BAVARIA : U: #60, 62, 63; BULGARIA , U, 1278-1280, 1974; BELARUS , 118-121, MNH. CV \$5.55		\$1.00
290	5 souvenir sheets. CAMBODIA , #1056, MNH, big puppy dog; GAMBIA , 507, MNH, Mickey Mouse, Donald; SOUTH AFRICA , 1122, MNH, Order of St. John; TANZANIA , 269a, MNH, Queen Mother; also 1151, MNH, Doberman Pinscher. CV \$14.00		\$4.00
291	MNH: CEYLON , #304-306; CHINA , 776-780, cpl set; 784-785 (785 is imperf); 1248-1249, cpl set. '12 CV \$6.85		\$3.00
292	EGYPT , \$447-451, MNH, strip of 5; ITALY , 1323-1326, block of 4 ships plus 2 labels, MNH. CV \$5.00		\$2.00
293	FRENCH INDIA , #112A-B, MNH; INDO-CHINA , 209, 209A, MNH; SAMOA , 33, MNH; YEMEN , 129-130, MNH. CV \$6.75		\$3.00
294	ITALY , MNH: #871-872, 928-929, 953-954, 956, 1077-1078; U: 413-415. POLAND (General Gouvernement) NO36, NO84, U. CV \$7.40		\$2.00
295	Ret. Omni Book. 56 U stamps: AUSTRALIA (9), AUSTRIA (1), BARBADOS (1), BERMUDA (1), CONGO (1), EGYPT (1), FINLAND (4), FRANCE (4), GERMANY (26), GREAT BRITAIN (7). Mostly recent large stamps. CV \$34.65. Roll the dice!		NMB

FOR YOUR PHILATELIC LIBRARY

- 296 Sources of philatelic history and reference. Languages as indicated below. Take your pick, bid on one or several or all. *Bid by Lot # and letter.* All useable, B & W illustrations and in good condition. Note: 40 year old paperbacks are going to be fragile. All NMB.
- A** Catalogo de Selos do Brasil (1949). Hardcover. (Portuguese)
 - B** Catalogo Especializado de Estampillas del Peru (1971). Hardcover (Spanish)
 - C** Catalogo Especializado Estampillas de Colombia (1972). Paperback (Spanish), 2 copies.
 - D** Catalogo de los Sellos de Chile (1974). Paperback (Spanish)
 - E** Catalogo Especializado de los Sellos de Mexico (1974). Hardcover (Spanish)
 - F** Catalogo Especializado de los Sellos de Mexico (1965). Hardcover (Spanish)
 - G** A History of British Postage Stamps (T.Todd, 1941). Hardcover, ex-library (English)
 - H** Bolaffi 1976 Catalogo Nazionale de Francobelli Italiani. Paperback (Italian)
 - I** The Regent Catalogue of Empire Postage Stamps (Vol 1---Issues to 1930) 6th Ed. (1939) (English)
 - J** Scott United States Stamp Catalogue Specialized (1974) Soft Cover (English)
 - K** Yvert et Tellier 1974 Vol. 1, Timbres de France, Andorre, Afrique du Nord, Monaco, Sarre. (French)
 - L** Scott United States Catalogue Specialized (1954) Hardcover (English)
 - M** Catalogo Sassone (Stamps of Italy) (1961) Paperback (Italian), binding in poor condition
 - N** Catalogo Unificado Especializado Edfil Espana y dependencias Postales (1973) Paperback (Spanish)
 - O** Catalogo Especializado de Estampillas 1974, Venezuela . Soft cover (Spanish)

Lot #	Description	Closes Oct. 3, 2014	Minimum Bid
-------	-------------	---------------------	-------------

BARGAIN BIN

These lots have appeared in previous sales and were not sold. They now re-appear with drastic price reductions averaging 50% or more. Some great bargains here!

UNITED NATIONS

BB297 MNH. Unique: the Terra Cotta warriors, intact booklet #718 (New York); booklet 316 (Geneva); booklet 232 (Vienna). Absolutely beautiful booklets with the whole story (in English, French & German) and the MNH stamps. CV \$40.75. Was \$25.00 in MBS #55. Heavily discounted to 28% of CV. \$12.00

ARGENTINA

BB298 Flowers. #1344-1356, MNH. CV \$14.00. Was \$8 in MBS #55. Price reduced by half! \$4.00

AUSTRALIA

BB299 100 years of Australian football, sheet of 16, #1492-1507, CTO; also 142, 147, U. CV \$18.65. Was \$9.00 in MBS #55. 50% off! \$4.50

BERMUDA

BB300 #75, 79, U, space fillers with close clipped perfs. If perfect, CV \$66.25. Was \$4.00 in MBS #55. Last call! NMB

CANADA/NEWFOUNDLAND

BB301 #49, U, LC, F/VF, sm. thin; 65, MH, HR, F/VF; 66, MH, HR, F/VF; 81, MH, HR, F/VF. CV \$27.75. Was \$6.00 in MBS #54. Great price! \$3.00

BB302 MH, F/VF or better: #117, 134, 157, 235, 236; also, 139, U, LH. CV \$24.75. Was \$8.00 in MBS #54. Good reduction! \$4.00

CANADA

BB303 #96, U, LC, G; 97, MH, F/VF; 98, U, F/VF, L to MC. CV \$29.50 Was \$9.00 previously in MBS #54. What a deal! \$4.50

BB304 #209, MH, F/VF; 210, MH, F/VF, some ink/paper adhesion to gum sides, both stamps. CV \$26.50. Was \$10.00 in MBS #55. Half price now! \$5.00

BB305 #C1, C2, U, L to MC, F/VF. CV \$24.74. Was \$10.00 in MBS #55. Here we go again! The price dives to: \$5.00

BB306 #C3, MH, F/VF. Brookman '13 CV \$16.00. Was \$7.00 in MBS #55. Cut to the bone! \$3.50

BB307 #C4, MH, VF. Brookman '13 CV \$30.00. Was \$14 in MBS #55. Hey! How about a new MB of: \$7.00

CHILE

BB308 1966 International Skiing Championship, #C266-C267, MNH. Also, a U set; S/S of 2 imperf, no gum. CV \$37.30. Was \$14 in MBS #54. Wow! \$7.00

COOK ISLANDS

BB309 Two 1985 FDC's, South Pacific mini games, #880-882, 883 S/S, special cancels. Est. Value \$28.50 was \$11 in MBS #54. Half off! \$5.50

GERMANY

BB310 Berlin Occupation (American, British, French sectors). U. #9N4, 9N7-9N9, 9N13-9N14, 9N21-9N22, 9N24-9N27, 9N31. CV \$91.10. Was \$30 in MNS #55. Slashed 67%! \$10.00

GREAT BRITAIN

BB311 #33, U, clipped from card, perfs clipped in places, LC; 127, U, HR, MC, F/VF; 131, U, HR, on-paper, MC, F/VF. CV \$26.75 Was \$10. Half off! \$5.00

BB312 8 good U classic era stamos: #78, 79, 113, 114, 115, 116, 118, 119. sound stamps, moderate cancels. CV \$81.75. Was \$15 in MBS #54. Reduced! \$7.50

ISRAEL

BB313 #1025, MNH, strip of 4 with tabs. Beautiful ducks. CV \$9.00. Was \$5.00 in MBS #55. I'll buy them myself! \$2.50

KOREA

BB314 #449-453 (1964 Olympics), MNH. CV \$12.50. Was \$8.00 in MBS #54. Now! \$4.00

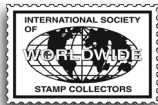
LIBYA

BB315 #306, S/S, MNH, three Tuareg riders. CV \$16.00. Was \$7, now reduced! \$3.50

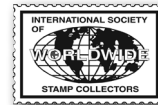
LIECHTENSTEIN

BB316 1984 Olympics maximum cards with #784-786. CV \$3.00. Only! NMB

Lot #	Description	Closes Oct. 3, 2014	Minimum Bid
NETHERLANDS & NETHERLANDS ANTILLES			
BB317	NETHERLANDS: #245-261, 352, 399 (block), 422, 455-457, 458-459 (x4), 469, B388-B391, all MNH; B149-B153, MLH, B154-B158, MLH. NETHERLANDS ANTILLES: #299, 313-315, 317-318 (x3), B68-B71, all MNH. Plus 58 U including some <i>Neth. Indies</i> . CV \$41.35. Was \$12.00 in MBS #54. Reduced!		\$6.00
PORTUGAL			
BB318	#1601a Europa S/S of 4 with label, M, LH on top margin. CV \$8.00 Was \$4.00 in MBS #55. Only!		\$2.00
RUSSIA			
BB319	#45, M, HR, F/Vf. CV \$50.00. Was \$10.00 in MBS #55. Cut by 50%!		\$5.00
BB320	#62, MH. CV \$50.00 Was \$10.00 in MBS #55. Now reduced!		\$5.00
BB321	#63, 64, MH. CV \$55.00. Was \$10.00 in MBS #55. Less than 10% of CV!		\$5.00
SAN MARINO			
BB322	#308-312 (short set), MLH; 364-369 (short set), MNH; 375-384, MNH, cpl set. CV \$25.00. Listed at \$8.00 in MBS #55. Now at 16% of CV!		\$4.00
SOUTH AFRICA			
BB323	Sports theme. #458 (x2), MNH, polo; 460 (x8), MNH, bowling; 549a, S/S of 4, MNH. CV \$6.50. Was \$43.00 in MBS #54. Reduced 50%!		\$1.50
SWITZERLAND			
BB324	#76, HC, perms touch design at bottom. CV \$20.00. Was \$7.00 in MBS #55. Hello!?		\$3.50
BB325	#C3, MH, VF; C4, MNH, F/VF, pulled perf; C5, MNH, F/VF, crease; C9, U, MC, F/VF. CV \$27.90. Was \$9.00 in MBS #55. Half off!		\$4.50
WORLDWIDE			
BB326	CAYMANS , #85-87, MLH; CHAD , 1, 3, MH, hinge thins; ERITREA , 19-20, MH. CV \$10.25. Was \$4.00 in MBS #55. Can you go for it?		\$2.00



MAIL BID SALE #60 BID SHEET ~ CLOSES OCT. 3, 2014



Please print clearly or attach an address label.
 Mail to ISWSC MA #60, c/o Mike Crump, PO Box 580, Whittier CA 90608-0580
 You may also scan and email your bids to desoto1947@yahoo.com

MEMBER # _____ NAME _____

ADDRESS _____
Street City State Zip Code Country

PHONE _____ EMAIL _____

LOT #	BID	LOT #	BID	LOT #	BID	LOT #	BID	LOT #	BID

You can pay with Paypal by inserting ExecutiveDirector@iswsc.org in the payee window.

MAIL BID SALE RULES AND INFORMATION

BID INCREMENTS

- \$1 to \$9.99 50¢
- \$10 to \$29.99 \$1
- \$30 to \$99.99 \$2
- \$100 or more \$5

Bid in these increments only. Odd amounts will be lowered to the next lowest increment. All bids must be in U.S. currency.

- High bidder wins at one advance over second-highest bidder.
- If there are tie bids, the earliest postmark wins.
- If only one bid is received, lot goes at the minimum bid listed by the owner.
- State the highest you are willing to pay. Your high bid will be used only if necessary. No "buy" bids or requests for percentage increases will be accepted.
- Mis-described or misidentified lots will be returned. No returns on large lots or collections, etc.
- The mail bid sale manager reserves the right to decline unreasonably low bids.
- Lot information will be sent to successful bidders with an invoice. The invoice will include postage and insurance fees, if appropriate. Payment is expected in U.S. currency within 10 days of the invoice date.
- Lots totaling \$100 or more and shipped in one package will be insured. To request insurance on shipments totaling less than \$100, contact the mail bid sale manager.
- Lots will be shipped and billed by the mail bid sale manager and payment should be sent to the address on the invoice. PayPal can be used by sending funds to ExecutiveDirector@iswsc.org on the PayPal website, www.paypal.com. There will be an additional 10% fee to cover these transactions. PayPal users should notify the auction manager by e-mail when payment has been made. The Society does not accept credit cards for payment.