

# MAIL BID SALE #61 ~ LOTS TO CHOOSE FROM!



**H**ello, happy stampers! MBS #s 58, 59 and 60 appeared in rapid succession as the newsletter was brought up to date. Pardon my skipping the Mail Bid Sale for the Sep/Oct newsletter. I was getting "shell-shocked." I should now have time to get to backlogged material that will be processed for future sales. Thank you for your interest in our Mail Bid Sales and for your support of our great society! We have more than 300 listings for your bidding pleasure in this issue. As they say in Chicago, bid early and bid often!

**Mike Crump, MBS manager**

## SALE CLOSES DEC. 1, 2014

| Lot #                | Description  | Closes Dec. 1, 2014 | Minimum Bid |
|----------------------|--|---------------------|-------------|
| <b>United States</b> |  |                     |             |
| 1                    | #114, U, MC, F/VF, slightly off-center, sound stamp. CV \$17.50  |                     | \$3.50      |
| 2                    | #537 (x2), (one is MH, F; other is M, VG/F, partial gum); 614-616, U, F/VF, L to MC, cpl set; 617-619, U, F/VF, MC; 623, MH, F/VF; C25, C28, C30, MNH; C27, MH. CV \$61.50   |                     | \$18.00     |
| 3                    | Plate blocks of 4, MNH: #879, 1077-1079, 1121, 1190, 1209, 1338, 1525, 1526, 1733, 2089, 2097, 2114, 2177b, 2399. Face value \$6. CV \$28.70   |                     | \$8.00      |
| 4                    | USPS hardcover book. Vol. 1, World War II Remembered: 1941, A World at War. Full of action pics and narrative. Part of a larger set. Each book was issued with a block of 10 stamps showing events of the year. This book for 1941 unfortunately has the stamps for 1942 events, #2697. Stamps CV \$7.50, face value \$2.90. Excellent mint condition.       |                     | \$3.00      |
| 5                    | Postmark collection. Rare Dec. 25 cancels from special towns. 18 covers: Christmas, MI; Christmas Valley, OR; Santa Claus, MI; North Pole, AK, etc., all diff. "O Little Town of Bethlehem (PA)!"  |                     | NMB         |
| 6                    | Topical military cover. On 8½"x9" manila envelope with all first day of issue cancels: General Stillwell (blk of 4); Submarine (blk of 5); distinguished Marines (pair); dist. Army (blk of 4), Air Force Academy, WWII Memorial, all with meaningful place cancels. Beautiful!  |                     | NMB         |
| 7                    | Baseball themed covers. Wonderful covers (players maybe not so wonderful). #1: Mark McGwire hits 62 <sup>nd</sup> home run - a new record, 9/8/98 pmk. #2: Pmk 10/3/99 (last day of season), Sammy Sosa, first to hit 60+ home runs in two consecutive seasons, 1998-66 homers, 1999-63. Heroes with feet of clay? Still, part of baseball history. Reserve. |                     | Best Offer  |
| 8                    | FD cover. On 8½"x7" manila envelope, last of millennium and first of new millennium, 2 blks of 4 each #3369 and 3370, 12/27/99 and 1/6/00 pmks   |                     | Best Offer  |
| 9                    | HBO. Collection of red books - Guide to U.S. coins. VG to excellent hardcovers, some almost like new. Years 1973, '74, '76, '77, '78, '79, '80, '81, '82, '83, '85, '86, '87, '88, '98, '00, '01. How about \$20.00?   |                     | \$20.00     |
| <b>Canal Zone</b>    |  |                     |             |
| 10                   | #142-145, MNH, F/VF. CV \$5.05   |                     | \$2.00      |
| <b>Aden</b>          |  |                     |             |
| 11                   | #13-15, MLH, cpl set; 28-29, MLH, cpl set. Also <b>Kathiri State of Seiyun</b> , 12-13, MLH, cpl set; <b>Quaiti State of Shihr and Mukalla</b> , 12-13, MLH, cpl set. CV \$3.70  |                     | NMB         |
| 12                   | #59, U, MC, F/VF; 74-75, U, LC. All higher denoms. CV \$40.00  |                     | \$10.00     |
| <b>Afghanistan</b>   |  |                     |             |
| 13                   | #871-872, MNH, cpl set; C14A, C57-C59, U; Q2, MH. CV \$8.20  |                     | \$3.00      |

| Lot #                                 | Description   | Closes Dec. 1, 2014 | Minimum Bid |
|---------------------------------------|---|---------------------|-------------|
| <b>Africa</b>                         |   |                     |             |
| 14                                    | Packet of 100+ common stamps, mostly MH, large variety of countries. Club owned.<br>I see <b>Djibouti, Fr. Somalia, Sp. Guinea, Sp. Sahara, South Africa, Togo, Tunisia, Upper Volta</b> , wide variety, no dup. CV \$25.00 |                     | NMB         |
| <b>Albania</b>                        |   |                     |             |
| 15                                    | #31, 202, U; 37 (used on piece); 33, 147, 148-182, 217, C8, Unused, F/VF to VF.<br>CV \$50.40   |                     | \$20.00     |
| <b>Algeria</b>                        |   |                     |             |
| 16                                    | Used early issues: #1-2, 4-5, 8, 12, 13 (pair), 14, 34, 36, 40, 44, 49-50, 58, 63, 85-86, 92-94, 96; P1-P2. Sound stamps, L to M cancels. CV \$11.55  |                     | \$3.00      |
| <b>Andorra</b>                        |   |                     |             |
| 17                                    | Spanish Admin. MNH: #75-76, 77-78, 79-80, 87-88, 116-118. CV \$11.15  |                     | \$4.00      |
| 18                                    | French Admin. MNH: #154, 172. CV \$5.00   |                     | \$2.00      |
| <b>Angola</b>                         |   |                     |             |
| 19                                    | #95, MH, F/VF; P1, M, NG. CV \$10.25  |                     | \$3.00      |
| <b>Antigua</b>                        |   |                     |             |
| 20                                    | World Cricket Cup. #402-403, MNH, cpl set. CV \$8.25  |                     | \$3.00      |
| <b>Australia</b>                      |   |                     |             |
| 21                                    | #51 (wmk 10), U, moderate circ. Cancel, F/VF; 122, U, LC, F/VF. CV \$23.00  |                     | \$7.00      |
| 22                                    | MNH: #94, F/VF; 197-199, 245, 248, 253-255 (strip of 3). CV \$16.00   |                     | \$6.00      |
| 23                                    | #142, U, LC, F/VF; 143, U, MC, F/VF. CV \$9.25  |                     | \$3.00      |
| 24                                    | Early used issues: #160, 166-167, 171, 173, 173a, 175, 180, 182-182B, 183, 191-192, 194-196, 203-204. Also, 1056, 1065, 1271, C5 (and space filler 161, not in CV). CV \$22.50  |                     | \$5.00      |
| 25                                    | #200-202, MNH, F/VF; 228-229, MNH, VF, 2 pairs, gutter between. CV \$4.95   |                     | \$2.00      |
| 26                                    | #211-212, 430, 433, 467, 472-473, 482, MNH. CV \$16.60  |                     | \$7.00      |
| 27                                    | #293 (wmk 228), MNH, plate block of 4. CV \$8.00  |                     | \$3.50      |
| 28                                    | A dozen recent large stamps, U, all LC: #2077//2927. CV \$31.65   |                     | \$5.00      |
| 29                                    | Donated club Lot. 300+ common stamps, large and small, little dup, to 1970s.  |                     | NMB         |
| <b>Australian Antarctic Territory</b> |   |                     |             |
| 30                                    | Used group: #L1, L4, L6 (x2), L7, L11, L16, L119a. CV \$7.45  |                     | \$2.00      |
| <b>Austria</b>                        |   |                     |             |
| 31                                    | All MNH: #647-648C, 711//717, 750-751, 785, 788 (x2), 842, 881 (x2), 1022, 1053, 1202 (x2), B224, B322, B324-B338. Quality material. CV \$12.00   |                     | \$5.00      |
| 32                                    | Under Italian occupation. General issues: #N70, MH; N72, U, MC; 73, MH (thin-not counted in CV). Trentino: N55, U, MC. CV \$17.10   |                     | \$6.00      |
| <b>Azerbaijan</b>                     |   |                     |             |
| 33                                    | Donated to club. Early group of 21 stamps, #5//28.  |                     | NMB         |
| <b>Azores</b>                         |   |                     |             |
| 34                                    | Space fillers for some expensive spaces: #8, 9, 10, 12. All with faults (close clipped, missing corner, etc.). They would catalog at over \$260 if not faulty. You can fill those spaces at \$2 each!                       |                     | \$8.00      |
| 35                                    | #103, MH, F/VF; 106, U, MC, F/VF; P3, M, NG (couple missing perfs). CV \$11.20  |                     | \$2.00      |
| <b>Bahamas</b>                        |   |                     |             |
| 36                                    | MNH: #267-268 (Boy Scouts), 294-297, 331-334, 450-453 (stamps on stamps), 202. CV \$7.25  |                     | \$3.00      |
| 37                                    | Three S/S: #312a (309-312 + labels), MH on margin (x2); 355a (352-355), MH on margin (x2); 361a (358-361), MH on margin (x2). CV \$5.75   |                     | \$2.00      |
| 38                                    | #267, 268, MNH, F/VF; 965-968, MNH, F/VF. Complete sets. CV \$7.45  |                     | \$3.00      |
| 39                                    | #170-171, U; 183-184, MNH; 196-199, U, MC. CV \$21.75   |                     | \$6.50      |
| 40                                    | #491a, S/S of 2, MNH, royal wedding, Charles and Diana. CV \$8.00   |                     | \$2.00      |

| Lot #                                    | Description  | Closes Dec. 1, 2014 | Minimum Bid |
|--|--|---------------------|-------------|
| <b>Barbados</b>                          |  |                     |             |
| 41                                       | Space fillers for some expensive spaces: #8, U, imperf, close-clipped, CV \$140; (9?, traces of fine perfs, corner torn off - who knows?); 46, U, clipped corner; 50, U ("bite" out of the top). <i>In good condition would be valued at approx. \$200.</i><br>Take them home! |                     | \$10.00     |
| 42                                       | Used: #60, 61, 61a, 62, 90-94, 96; also, 127, MH. CV \$12.75   |                     | \$4.00      |
| <b>Bechuanaland Protectorate</b>         |  |                     |             |
| 43                                       | #J5, MH, VF. CV \$8.00   |                     | \$3.00      |
| <b>Belgium</b>                           |  |                     |             |
| 44                                       | B-O-B. #Q10, Q14, Q17, U (Q10, blunt corners); Q42-Q45, MH, F/VF; N11-N12, N14, MH, F/VF. CV \$16.15   |                     | \$5.00      |
| 45                                       | #J1, MH, F/VF, dist. gum; J2, MH, HR, F/VF. CV \$33.75   |                     | \$10.00     |
| 46                                       | MH: #78, 79, 92-94, 95, 267; used: 98, 99. CV \$20.05  |                     | \$6.00      |
| 47                                       | MNH: #566-567, 598-599, 660-662, 1561, 1835. CV \$7.60   |                     | \$3.00      |
| 48                                       | #400, M, LH, F/VF. CV \$4.50   |                     | \$2.00      |
| <b>Benin</b>                             |  |                     |             |
| 49                                       | Two complete sets of MNH doggies: #741-746, 980-985. CV \$14.45 Woof-woof!   |                     | \$6.00      |
| <b>Bermuda</b>                           |  |                     |             |
| 50                                       | How often can you own a #1? Here it is: #1, U, LC, F/VF (CV \$1.75). Also, #3, U, M to H cancel, (some short perfs), CV \$80.00. Total CV \$81.75  |                     | \$20.00     |
| 51                                       | Early U group: #16, LC; 18, 19, 21, 22, 30, 34. CV \$11.20   |                     | \$3.00      |
| 52                                       | Used group: #18, 19, 19a, 22, 34, 35, 37, 109A, 111, 112. All sound stamps. CV \$20.55   |                     | \$4.00      |
| 53                                       | #115-117, MLH, F/VF, cpl set; 135-136, MLH; 137, U, LC; 143, 145-147, 149, 155, MLH; 168, MLH; MR1, MR2, U, LC. CV \$11.10   |                     | \$3.00      |
| 54                                       | #152, MLH, F/VF; 153, MNH, F/VF. CV \$8.00   |                     | \$2.50      |
| <b>Belarus</b>                           |  |                     |             |
| 55                                       | Packet of 25 stamps, recent, CTO. #19//120. CV \$7.15  |                     | \$2.50      |
| <b>Belize</b>                            |  |                     |             |
| 56                                       | #346-350, MH, short set, butterflies; 853-856, MNH, cpl. Set. CV \$15.80   |                     | \$6.00      |
| <b>Bhutan</b>                            |  |                     |             |
| 57                                       | #94-94H, 94J, MNH (short set); 97-97G, MNH, cpl set; 99-99H, 99J, MNH, (short set); 102-102G, MNH, cpl set. CV \$13.85   |                     | \$6.00      |
| 58                                       | #126D-126G, MNH (short set). Unique plastic heat molded into 3-D. These 4 are the airmails of the set. Imperf and self adhesive. CV \$24.00  |                     | \$8.00      |
| 59                                       | #130-133, C21-C23, MNH, cpl set; 134-139, MNH, cpl set. CV \$7.80  |                     | \$2.50      |
| 60                                       | #144C, 144E-144G (short set), MNH, Unique textured finish with hand-painted look; 130-133, MNH, cpl set; 147-147G, MNH, cpl set; 150-150E, MNH, cpl set; 155-155G, MNH, cpl set; 164-167, MH, short set. CV \$25.70  |                     | \$10.00     |
| 61                                       | Airmails, MNH: #C2, C4, C5, C11, C13, C16, C20. CV \$13.10   |                     | \$5.00      |
| 62                                       | Battle of Britain: Lancaster bomber, Spitfire and Hurricane fighters, #88-88B, MNH. Beautiful set. '10 CV \$10.50  |                     | \$4.00      |
| <b>Bolivia</b>                           |  |                     |             |
| 63                                       | #C123, C128-C129, C138-C139, MH, F/VF. CV \$8.00   |                     | \$4.00      |
| <b>Brazil</b>                            |  |                     |             |
| 64                                       | #1176, MH, F/VF; P23, MNH, spotty gum, short perf lower R.S. CV \$5.25   |                     | NMB         |
| 65                                       | #C66-C67, C74, MNH. CV \$7.80  |                     | \$2.00      |
| 66                                       | MNH: #1030-1031, 1072, 1110-1111, 1180, RA25-RA28. All cpl sets. CV \$5.60   |                     | \$2.00      |
| <b>British Commonwealth and Colonies</b> |  |                     |             |
| 67                                       | Donated Club lot. Packet of 100+ stamps, mostly large, looks like 50/50 MH/U. Mostly common stamps, all kinds of places, no dup. I note Bermuda, Br. Guiana, Cayman Is., Ceylon, Cyprus, Jamaica, Mauritius, Sarawak and more. Sorting and cataloging fun!                     |                     | NMB         |

Lot # Description  Closes Dec. 1, 2014  Minimum Bid

**British East Africa**

68 #14, MH, F/VF. Also used: 82, MC, F/VF; 83 (ultra or pale blue?), MC, F/VF; 84, MC, F/VF. You decide on #83: ultra (CV \$80) or pale blue (CV \$30).  
Total CV \$123.25 or \$73.25 \$25.00

**British Guiana**

69 #152, U, MC, F/VF; 153, U, MC, F/VF (rough perfs on RS); 205, U, LC, F/VF; 206, U, MC, F/VF. CV \$8.50 \$2.50

70 #152, U, LC, F/VF; 211, U, LC, F/VF; 213, U, MC, F/VF; 230-235, U, L to M cancels; 239, MH, F/VF. CV \$19.15 \$4.00

**British Honduras**

71 #15, U, MC, wmk 2, F/VF; 28, MH, F/VF; 89, U, MC, F/VF; 90, U, LC, F/VF; 247-250, MNH, cpl set. CV \$9.80 \$3.00

72 Two blocks of 4, U, CTO, #174 and 178. CV \$8.00 \$2.00

**Burundi**

73 MNH: #361-363, C143-C145, 425-427, C178-C180. Xmas/religious theme. CV \$11.95 \$4.00

74 MNH: #425-427, C178-C180. Religious theme. CV \$6.00 \$2.00

**Cambodia**

75 #1721-1725, CTO, short set; 1950-1955, MNH, short set. CV \$9.30 \$2.50

**Canadian Provinces (New Brunswick)**

76 #8, U, L to M cancel, F/VF. CV \$22.50 \$7.00

77 #9, U, MC, off-center to L. CV \$47.50 \$20.00

**Canadian Provinces (Newfoundland)**

78 #48, U, HC, F/VF; 49, U, MC, F/VF (crease). CV \$16.25 \$5.00

79 #58, U, MC, off-center; 87, U, MC, F/VF; 139, U, LC, F/VF; 145-148, U, LC, F/VF; 189, U, MC, F; 226, MC, (corner perf); 232, U, LC, F/VF. CV \$17.05 \$5.00

80 #115, U, LC, F; 116, MH, F/VF; 119, M, NG, F/VF. CV \$10.60 \$2.50

..... **ABBREVIATIONS** .....

& = And

+ = Plus

// = Incomplete

ADDR = Address (ed)

ANN = Anniversary

APPROX = Approximate (ly)

APS = American Philatelic Society

BKLT = Booklet

BLK = Block

BOB = Back of Book

CAT = Catalog (d)

COMMEM = Commemorative (s)

(IN)CPL = (In)Complete

CTO = Cancelled to Order

CV = Catalog Value (latest Scott or year listed)

DEFIN = Definitive (s)

DIFF = Different

DUP = Duplicate (s)

EST = Estimate (d)

F = Fine (off center, but perfs don't touch design)

FD(C) = First Day (Cover)

G = Good (perfs cut into design)

HBO = Held by Owner

HC = Heavy Cancel

HH = Heavy Hinge

HR = Hinge Remnant

ID'd = Identified

INCL = Include (s) (ed)

LC = Light Cancel

LH = Light Hinge

M or \* = Mint

MC = Moderate Cancel

MH = Mint Hinged

MLH = Mint Lightly Hinged

MNH or \*\* = Mint Never Hinged

NG = No Gum

NMB = No Minimum Bid

OG = Original Gum

PNB = Plate Number Block

RET = Retired, Returned

SE = Straight Edge

SON = Socked on the Nose

S/S = Souvenir Sheet (s)

TH = Thin

U = Used

UNADDR = Unaddressed

VF = Very Fine (wide margins)

VG = Very Good (perfs touch design)

W/(O) = With(out)

WMK = Watermark

XF = Extra Fine

*Get the most out of your Society membership - participate in our many available programs.*



| Lot #                              | Description   | Closes Dec. 1, 2014 | Minimum Bid |
|------------------------------------|---|---------------------|-------------|
| <b>Canada</b>                      |   |                     |             |
| 81                                 | #38, U, MC, (off-center to lower, few missing perfs). CV \$27.50  |                     | \$3.00      |
| 82                                 | #99, MNH (UR corner torn off). Space filler. If perfect, CV \$45.00   |                     | NMB         |
| 83                                 | #110, MH, (off-set to L, perfs do not penetrate design). CV \$47.50   |                     | \$15.00     |
| 84                                 | #115, U, MC, F/VF; 134, U, MC, coil, off-center. CV \$16.50   |                     | \$5.00      |
| 85                                 | #177, U, MC, F. High value of set. However, spot seen only from gum side. CV \$27.50  |                     | NMB         |
| 86                                 | #227, U, MC, F/VF. High value of set. CV \$11.00  |                     | \$2.50      |
| 87                                 | Used: #E7, LC, F/VF; E8, LC, F/VF. CV \$28.25   |                     | \$10.00     |
| <b>Ceylon</b>                      |   |                     |             |
| 88                                 | #4, U, LC (close-trimmed-no margin-2 sides). CV \$67.50. Priced to sell!  |                     | \$10.00     |
| 89                                 | Birds of Ceylon. #378a (x2), S/S of 4, one is MNH, other is MH on 2 corners. CV \$20.00   |                     | \$8.00      |
| <b>Chile</b>                       |   |                     |             |
| 90                                 | Great MNH quality lot: #216, 264-266, 268-274, 276, 281-285, 287-293, C42, C95, C97, C135-C137, C141, C145, C151, C155, C159, C161-C163, C167, C170-C172 and Saltire local postal tax stamp, F/VF. CV \$23.60 |                     | \$10.00     |
| <b>China and Republic of China</b> |   |                     |             |
| 91                                 | #465-468, 601-602, 1177, 1218-1218A, 1219, 1220, MH; C20, MNH. CV \$11.65   |                     | \$4.00      |
| <b>China, Republic of</b>          |   |                     |             |
| 92                                 | MNH: #1758-1762m cpl set. CV \$10.70  |                     | \$4.00      |
| <b>Colombia</b>                    |   |                     |             |
| 93                                 | #725, imperf S/S, MH; C335-C336, C341, C610, MNH. CV \$5.75   |                     | \$2.00      |
| 94                                 | MNH: #597-600, 638, C273, 695, C313-C314, 750, C447, 787-788, C517. Cpl sets. CV \$4.35   |                     | \$2.00      |
| <b>Cook Islands</b>                |   |                     |             |
| 95                                 | #145, 146, MH, F/VF, QE II Coronation Issue. CV \$2.90  |                     | NMB         |
| 96                                 | MNH: #329a, S/S + label; 371a, S/S + label; 451-454, cpl set; B29, S/S; 502, sheet of 6. CV \$18.05   |                     | \$7.50      |
| 97                                 | MNH. #767-788, cpl set of 12. Save the Whales! CV \$21.15   |                     | \$8.00      |
| 98                                 | #O29, S/S, CTO, five stamps of #466 with "O.H.M.S." overprint and 1 label. CV \$11.25   |                     | \$5.00      |
| <b>Cuba</b>                        |   |                     |             |
| 99                                 | Christmas Issues, complete sets, MNH: #588-589, 611-612. CV \$20.00   |                     | \$7.00      |
| 100                                | Packet of 31 U/CTO stamps, all large: #3036-3040, 3108-3111, 3116-3119, 3198-3199, 3200-3202, 3217-3220, 3228-3231, 3311-3315. CV \$7.55  |                     | \$3.00      |
| <b>Czechoslovakia</b>              |   |                     |             |
| 101                                | #3, 47, 119, 152-154, Used; 339, MNH, VF; 1157, 1158, MH; C28-C31, U, MC, F/VF; J13, U, good margins. Bonus: <b>Costa Rica</b> : C417-C419, MH. CV \$4.85   |                     | NMB         |
| <b>Denmark</b>                     |   |                     |             |
| 102                                | Postage dues: #J25-J28, J30, J32-J34, J36-J37, U, L to M cancels. Bonus: O9, U, (Space filler, thin, hole - a good one) CV \$32.50  |                     | \$1.00      |
| <b>Dominica</b>                    |   |                     |             |
| 103                                | #17, U, MC, F/VF; 19, U (repaired tear, not in CV). CV \$6.25   |                     | \$1.50      |
| <b>Dominican Republic</b>          |   |                     |             |
| 104                                | #265B, 433-435, 474-478, C1, C97-C99, RA1, RA29. CV \$7.00  |                     | \$2.00      |
| <b>Eritrea</b>                     |   |                     |             |
| 105                                | #1, MH (corner crease). CV \$10.00  |                     | \$2.00      |
| 106                                | Donated club lot. #39, 151, 154, 159, 164, U; 119, B13-B16, MH; 158, MNH. '13 CV \$15+. Bonus: 8 more diff U stamps.  |                     | NMB         |
| <b>Estonia</b>                     |   |                     |             |
| 107                                | #127, U, M to H cancel, F/VF; 137, U, MC, F/VF; C2, U, MC, good margins. CV \$45.00   |                     | \$13.00     |
| <b>Falklands and Dependencies</b>  |   |                     |             |
| 108                                | Donated club lot. #87, 107, MH. Dependencies, all MH: 1L19, 2L1, 3L1, 3L4, 4L1, 4L2, 4L3, 5L1. CV \$7.80  |                     | NMB         |

| Lot #   | Description  | Closes Dec. 1, 2014 | Minimum Bid |
|---|--|---------------------|-------------|
| <b>France</b>                                     |  |                     |             |
| 109   | Prize winning cartoons. #2099a, Bklt pane of 12 (#2088-2099), MNH. CV \$12.00  |                     | \$5.00      |
| 110   | Greetings stamps. #2394a, Bklt pane of 12 (2383-2394), MNH. CV \$15.00   |                     | \$7.00      |
| 111   | French-Swedish cultural relations. #2415a, Bklt pane (2410-2415), MNH. CV \$25.00  |                     | \$11.00     |
| <b>Fujeira</b>                                    |  |                     |             |
| 112   | Set of nine ships (not in Scott), Michel Catalog #234-242. Michel CV \$20.00   |                     | \$5.00      |
| <b>Gabon</b>                                      |  |                     |             |
| 113   | #J3, MNH, corner blk of 4 with margin on two sides. CV \$5.00  |                     | \$1.50      |
| <b>Gambia</b>                                     |  |                     |             |
| 114   | #3001, S/S, MNH, sheet of 10 stamps, Great American Indian Chiefs. CV \$8.50   |                     | \$3.00      |
| <b>German States (Baden)</b>                      |  |                     |             |
| 115   | #4, U, MC, imperf, sides a bit rough (CV \$24), old paper hinge remnant; 7, U, MC, imperf (CV \$14), old paper hinge remnant. Two classics. CV \$38.00   |                     | \$12.00     |
| 116   | #16 (6 Kr. Prussian blue, 1862), U, close-clipped bottom, torn off corner. <i>This space filler would be \$72.50 if sound.</i>   |                     | \$5.00      |
| 117   | #20, U, good perfs all around, off-center. Also, <b>Bavaria</b> , 41, U, good cancel. CV \$5.25  |                     | \$2.00      |
| <b>German States (Bavaria)</b>                    |  |                     |             |
| 118   | Used group, L to MC: #60, 62, 64, 95-98, 103, 262-263, O7, O12-O13, O15. CV \$20.15  |                     | \$8.00      |
| <b>German States (Hamburg)</b>                    |  |                     |             |
| 119   | #12, Unused, crease across stamp looks like printing defect. I cannot confirm the watermark (but some genuine stamps don't have it anyway). So, expertization may be in order. Scott says "2½'s have been reprinted on watermarked and unwatermarked paper." CV \$140.00 |                     | \$10.00     |
| <b>German States (Hanover)</b>                    |  |                     |             |
| 120   | #29, M, NG, HR, F/VF. CV \$60.00   |                     | \$20.00     |
| <b>German States (Lubeck)</b>                     |  |                     |             |
| 121   | #1, U, imperf, margins clear all around. Scott warns of reprints. I find no watermark. Reprints have value but no used value stated. <i>Original has CV \$2000.00.</i> I have my doubts. Want to give it a try?  |                     | \$15.00     |
| 122   | #5, looks like a dirty old stamp, imperf, no cancellation. <i>Mint is \$25.00.</i> I don't detect a watermark. Small tear. Reprint? How about it?  |                     | \$3.00      |
| <b>German States (Prussia)</b>                    |  |                     |             |
| 123   | #8, U (R margin cut to design at corner), has the color that marks the genuine (CV \$40.00). Also, 17 and 18, U, MC. Total CV \$43.20  |                     | \$10.00     |
| <b>German States (Schleswig-Holstein, Saxony)</b> |  |                     |             |
|   | <b>Schleswig-Holstein:</b> #8, U, bullseye cancel, missing corner UL; <b>Saxony:</b> 15, MH, HR, creased. Well, these are kind of tired looking (like me), but considering their age I'd make allowances. CV \$21.00   |                     | \$5.00      |
| <b>German States (Thurn and Taxis)</b>            |  |                     |             |
| 125   | #1, U, moderate bullseye cancel. However, corner torn off and repaired holes detract from value. Adequate space filler for an expensive stamp. CV \$60.00  |                     | \$6.00      |
| 126   | #17, U, bullseye cancel, tear on LS (2.5 mm), space filler. CV \$47.50   |                     | \$4.50      |
| <b>German States (Wurttemberg)</b>                |  |                     |             |
| 127   | #34, U, MC, rough perfs. This "rough rider" can fill that space and is priced accordingly. Bonus: <b>DDR</b> 1184-1187, MNH, cpl set. CV \$13.50   |                     | \$1.00      |
| <b>Germany</b>                                    |  |                     |             |
| 128   | Semi-postals. #B212-B214, MNH, with 10/19/42 overprint, cpl set. CV \$7.50   |                     | \$2.50      |
| 129   | MNH: #B987a, S/S, Sports theme. CV \$12.00   |                     | \$5.00      |
| 130   | Franchise stamps for use by the national Socialist German Workers Party. Appear to be used, NG, no cancellation, a couple with creases, #S5, S12-S16. CV \$10.15   |                     | \$2.50      |

| Lot #                                   | Description  | Closes Dec. 1, 2014 | Minimum Bid |
|---|--|---------------------|-------------|
| <b>Germany (Berlin)</b>                 |  |                     |             |
| 131                                     | Used: #9N176-9N181, 9N183, 9N187-9N189. CV \$14.65   |                     | \$3.00      |
| 132                                     | #9N305-9N310, MNH, cpl set in blocks of 4 each. CV \$18.80   |                     | \$6.00      |
| <b>Germany (DDR)</b>                    |  |                     |             |
| 133                                     | #272-277, CTO, cpl set. Also, <b>Germany</b> , #883-890, S/S sheet of 8, MNH. CV \$39.15   |                     | \$10.00     |
| 134                                     | A great MNH group with long runs and complete sets: #1976-1990, 2000-2019, 2035-2036, 2038-2039, 2044-2056. CV \$33.15   |                     | \$13.00     |
| <b>Gibraltar</b>                        |  |                     |             |
| 135                                     | #485-489, MNH, VF, cpl set, Stamps-on-Stamps. CV \$9.50  |                     | \$4.00      |
| 136                                     | Used: #860-863, 885-886, LC, VF. CV \$19.50  |                     | \$8.00      |
| <b>Great Britain (Guernsey)</b>         |  |                     |             |
| 137                                     | #203A (5 pound denom.), MNH, VF. CV \$16.00  |                     | \$8.00      |
| 138                                     | #J8-J13, J16, MNH. CV \$3.50   |                     | NMB         |
| <b>Great Britain (Isle of Man)</b>      |  |                     |             |
| 139                                     | #113-129, cpl U/CTO set of 17 stamps. CV \$12.40   |                     | \$5.00      |
| <b>Great Britain (Jersey)</b>           |  |                     |             |
| 140                                     | Beautiful First Day covers on Stamps. #22-25, MNH, in blocks of 4. CV \$14.40  |                     | \$7.00      |
| <b>Great Britain</b>                    |  |                     |             |
| 141                                     | #12, U, MC, (several close-clipped perfs on UL corner). A good space filler. \$67.50   |                     | \$6.00      |
| 142                                     | #33, U, MC, F/VF; 252-257, MH, F/VF, cpl set; 271-274, MNH, cpl set; 1315, 1317, U, with Philatelic Bureau cancels. CV \$16.65   |                     | \$4.00      |
| 143                                     | #49, U, HC, F/VF. CV \$60.00. Good price ...   |                     | \$10.00     |
| 144                                     | #187-194, U, short set. CV \$19.70   |                     | \$2.00      |
| 145                                     | Odds and Ends: #296, MH; 300, MH; 413p, U, M to HC; 1230-1233, U, cpl set of 4; J5, MH. CV \$36.25   |                     | \$10.00     |
| 146                                     | #309, U, LC, Blk of 4; 310, U, LC. CV \$9.50   |                     | \$2.00      |
| 147                                     | Four MNH complete and intact booklets: #BK 317, BK403, BK404 (military aircraft), BK594. CV \$34.00  |                     | \$13.00     |
| 148                                     | Large (27 x 31mm) Machin heads. #MH18-MH21, MNH, VF. '14 CV \$13.80  |                     | \$4.50      |
| <b>Great Britain/Offices in China</b>   |  |                     |             |
| 149                                     | #11, U, MC, F/VF. CV \$6.50  |                     | \$3.00      |
| <b>Great Britain/Offices in Morocco</b> |  |                     |             |
| 150                                     | #210, 220, 221, 223, U, MC, F/VF. CV \$16.90   |                     | \$5.00      |
| <b>Greece</b>                           |  |                     |             |
| 151                                     | #3, U, MC (close-clipped). CV \$150.00   |                     | \$30.00     |
| 152                                     | #68, U, MC (creases); 117, M, NG; 120, M, NG. '14 CV \$20.50   |                     | \$4.00      |
| 153                                     | #537, U, MC. '14 CV \$9.00   |                     | \$4.00      |
| 154                                     | MNH: #806-812, 909-915, 932-934, 949-952, 1027-1028, 1053-1054. CV \$12.40   |                     | \$5.00      |
| 155                                     | MNH: #886-890 and #1181-1186 in blocks of 4. Very impressive. CV \$14.00   |                     | \$5.50      |
| 156                                     | MNH: #1656b, bklt pane of 4; FD cover, same stamps, with 1996 Olympic special cancel, colorful cachet; 1653-1656, singles, cpl set. Pristine material. CV \$20.60  |                     | \$8.00      |
| 157                                     | Donated club lot. 90+ common stamps, M & U, looks like pre-1960, not much duplication. Bonus: 91, 117, MH.   |                     | NMB         |
| <b>Grenada Grenadines</b>               |  |                     |             |
| 158                                     | #2529, sheet of 5, #a-e, MNH, with large portrait of Pope John Paul II, 25 <sup>th</sup> Anniv. '14 CV \$7.50  |                     | \$3.00      |
| <b>Guadeloupe</b>                       |  |                     |             |
| 159                                     | If you had a chance to grab the bulk of a country you wanted for 10% of CV, including many key and pricey stamps, wouldn't you do it? Here's an island that issued stamps until 1947 (when it started using stamps of France). Mounted on album pages, many in mounts. A partial sample: #1, M (couple of minor thins), 2 U, 3 M, 4 U, 6-11 M, 12 U (CV \$375 but not in CV-possible forgery), 14 M, 15 U, 16 M, 17 U, |                     |             |

| Lot #                         | Description  | Closes Dec. 1, 2014 | Minimum Bid |
|-------------------------------|--|---------------------|-------------|
| <b>Guadeloupe (continued)</b> |  |                     |             |
|                               | 18 U and onwards. 241 stamps including some B-O-B. Many high values like 20 U, 22 M, 23, 24, 26 M. Complete Scott list with 2013 CV. Some Postage Dues. Don't miss the famous Fournier Forgeries (#29, 30, 33, 34, 35, 40, 43, 44), scarce and valuable in their own right, included but sequestered from the collection. '13 CV \$1686.55 |                     | \$165.00    |
| <b>Guinea</b>                 |  |                     |             |
| 160                           | Group A. 75 CTO/used stamps from #175//327 including 7 cpl sets. Scott # list incl. Lots of large stamps, mostly CTO. '09 CV \$19.75   |                     | \$5.00      |
| 161                           | Group B. Mostly CTO. 55 stamps: #361-371, cpl set; 438//479, 520//607; a few others, 670//806, C120//C144. CV \$24.05  |                     | \$6.00      |
| <b>Guyana</b>                 |  |                     |             |
| 162                           | Not to be left out of the baseball fun, Guyana issued its own set of 12 baseball card stamps in 1995 featuring Babe Ruth in 12 diff portraits. MNH stamp set (in original sealed package) size 64 x 89mm, self-adhesives. The "Sultan of Swat" set can be yours! '12 Scott CV \$70.00  |                     | \$20.00     |
| <b>Hong Kong</b>              |  |                     |             |
| 163                           | Used: #214-216, 223-224, 226, 228, 257-258, 263-264. '14 CV \$33.30  |                     | \$12.00     |
| 164                           | Packet of 23 stamps, U, with Scott # list: #159B//636. CV \$24.80  |                     | \$8.00      |
| <b>Hungary</b>                |  |                     |             |
| 165                           | #25, MH; 26, U, MC; also space filler 35 (repaired).   |                     | NMB         |
| 166                           | #2323-2329, MNH, cpl set; 2515-2520, MNH. CV \$5.85  |                     | \$2.00      |
| 167                           | Donated club lot. Packet of 140+ common stamps, mostly U or CTO, more small than large, some B-O-B. Pre-1970 stamps.   |                     | NMB         |
| <b>Iceland</b>                |  |                     |             |
| 168                           | #131, 133, 147, Used, MC. '14 CV \$31.00   |                     | \$10.00     |
| 169                           | #220, U, LC, F; 251, M, LH, F/VF. CV \$26.00   |                     | \$10.00     |
| 170                           | #224b, M, LH, F/VF, perf 14 x13.5. '14 CV \$65.00  |                     | \$25.00     |
| 171                           | Semi-postals. All MH: #B7-B11, cpl set; B12; B14-B16, cpl set; B17-B18, cpl set; B21-B22, cpl set; B23-B24, cpl set. '14 CV \$14.15  |                     | \$5.00      |
| <b>India</b>                  |  |                     |             |
| 172                           | #218, MH, F/VF. '14 CV \$22.50   |                     | \$7.00      |
| 173                           | #555 (x2, one MNH, one U); 582 in India Post commemorative booklet (Hindi/English), special Bombay cancel; also, 582 on piece, same cancel. '14 CV \$18.00   |                     | \$5.00      |
| 174                           | India Post commemorative booklet (Hindi/English): #646 (Marconi), Bombay cancel; 709-710 special cancels. Also, 662-664, block of 4, on piece, commem. Cancel. '14 CV \$12.75  |                     | \$3.00      |
| 175                           | Four India Post commemorative booklets (Hindi/English) with #744, 751, 767 and 774 with special Bombay GPO cancels. '14 CV \$9.10  |                     | \$2.00      |
| 176                           | Two India Post commemorative booklets (Hindi/English) with #773-778 and 796 with special Bombay GPO cancels; also, 1079, Indira Gandhi on piece with special cancel. Bonus: Five more India post booklets (no stamps). '14 CV \$9.35   |                     | \$2.00      |
| 177                           | International Commission in Indo-China/Vietnam. #12, MH, F/VF. Also, <b>China, PRC</b> : '14 CV \$5.60   |                     | NMB         |
| <b>Inini</b>                  |  |                     |             |
| 178                           | This small French Territory on the North Coast of South America issued its own stamps from 1932 to 1942. Here's a collection of 41 stamps (most of those issued), hinged on album pages, that can be had for a pittance. #1//45, CB1-CB2, J1-J10. Includes 41, S/S. All MH. Total CV \$76.10   |                     | \$15.00     |
| 179                           | #42-43, MH, F/VF. '14 CV \$7.50  |                     | \$2.50      |



| Lot #                         | Description   | Closes Dec. 1, 2014 | Minimum Bid |
|-------------------------------|---|---------------------|-------------|
| <b>Iran</b>                   |   |                     |             |
| 180                           | MH: #75, 83, 90, 91, 92, 96, 97, 104, 560-561, 564-565. '14 CV \$19.50  |                     | \$7.00      |
| 181                           | #425-427, MH. Scott says forgeries are plentiful. '14 CV \$137.50. Take a shot!   |                     | \$7.00      |
| 182                           | #483, MH, F/VF; 483a, M, NG, F/VF; O8-O10, MH, HR. '14 CV \$16.00   |                     | \$4.00      |
| 183                           | #871-875, M, LH, cpl set; 1331, 1333, MNH. CV \$35.70   |                     | \$14.00     |
| 184                           | #O16, MH, printing creases, '14 CV \$40.00  |                     | \$15.00     |
| <b>Iraq</b>                   |   |                     |             |
| 185                           | Packet of 50 mostly large Used stamps, #187//529, 7 B-O-B. CV \$24.40   |                     | \$10.00     |
| <b>Ireland</b>                |   |                     |             |
| 186                           | Gaelic football team of the millennium. #1185, MNH, sheet of 15 + label (a-o). '14 CV \$30.00   |                     | \$12.00     |
| 187                           | Celebrating the millennium - Epic Journeys. #1222, MNH, sheet of 12, 2 each, #a-f. '14 CV \$27.50   |                     | \$11.00     |
| 188                           | Team of the millennium, Hurling. #1246, S/S of 15 + label (a-o), MNH. CV '14 \$15.00  |                     | \$7.00      |
| 189                           | Soft cover little album from Dept. of Posts (circa 1954). Filled with 70 classic MH stamps. Many high values. (Album marked up with Scott #s, rather "shop worn.") #66//154. Plus C1-C6. Highest values: 67, 69, 71, 72, 73, 74, 75, 76, 81, 82, 86, 89, 100, 102, 104, 132, 134, 136, 140, 143, 144, 148, 150 152, 154, C1, C2, C4, C6 (No minimum values). Beautiful stamps, Scott # list included. '14 CV \$475.15 |                     | \$150.00    |
| <b>Israel</b>                 |   |                     |             |
| 190                           | Packet of 11 U stamps: #13, 15, 24, 27, 30, 32, 33, 34, 37, 253, 262. CV \$11.15  |                     | \$4.00      |
| <b>Italy/Roman States</b>     |   |                     |             |
| 191                           | Gee, these are hard to catalog and there are lots of variations, colors, etc., not to mention reprints - which these may be. See notes in Scott. Here is my take on these stamps: #19, 20, 21, 22a, 23a, 24b, 25d. '14 CV would be \$357.50. How about 4 percent of CV?   |                     | \$15.00     |
| <b>Italy</b>                  |   |                     |             |
| 192                           | Early group. #36, U, M to HC, F/VF; 62, U, blunt corner; 75, U, Avg. centering; 78, U, Couple pulled perfs; 95, MH, avg. centering; 105 (x2) with Singer ad label (one is a space filler, not in CV). CV \$59.35. Priced by condition.  |                     | \$6.00      |
| 193                           | #254, U, MC; 262, U, MC. Cancels read "Taormino" and "Trieste," respectively. '14 CV \$21.50  |                     | \$8.00      |
| 194                           | #274, MNH, VF. '14 CV \$16.00   |                     | \$6.00      |
| 195                           | High values: #418, U, MC, F/VF; 477, 477a, U, MC. '14 CV \$27.00  |                     | \$9.00      |
| 196                           | High values: #506, U, MC, F/VF; 514, U, MC, F/VF. '14 CV \$36.50  |                     | \$10.00     |
| 197                           | High values: #596, U, MC, F/VF; 600, U, MC, F/VF. '14 CV \$41.50  |                     | \$12.00     |
| 198                           | #672, MNH, adhesions gum side. '14 CV \$30.00   |                     | \$4.00      |
| 199                           | #1297, U, MC, F/VF; 1706, MLH; 1707, MLH. '14 CV \$17.75  |                     | \$5.00      |
| 200                           | #B8 (gum side paper adhesion; perf, corner issues). Pricey stamp (CV \$100). Wow!   |                     | \$8.00      |
| 201                           | B-O-B. #C126, U, pair; E6, U, M to HC; E23, U, MC; J20, U, LC, off-center. CV \$18.55   |                     | \$4.00      |
| 202                           | Parcel post. #Q8, MH; Q9, MH, spotty gum; Q58, U (halves separated and cancels don't match, not incl. in CV). '14 CV \$25.00  |                     | \$7.50      |
| 203                           | Parcel post. #Q11, MH. '14 CV \$32.50   |                     | \$9.00      |
| 204                           | Packet of 40 used + 3 MH: #105h//963. Best: 105h, 275, 295, 384, 439, 567, 659. No min. values included in CV: \$42.30  |                     | \$10.00     |
| <b>Italy (Aegean Islands)</b> |   |                     |             |
| 205                           | <b>Scarpanto</b> , #4, M, HR; <b>Stampalia</b> , 4, M, HR. '14 CV \$25.50   |                     | \$10.00     |
| <b>Italy (Saseno)</b>         |   |                     |             |
| 206                           | Italian possession. #2, M, HR. Island occupied by Italy in 1914. '14 CV \$30.00   |                     | \$10.00     |
| <b>Italy and AMG</b>          |   |                     |             |
| 207                           | #182, 437, MH; 1LN17, 1LN18, 1LN19. The big value here is 1LN19, F/VF. CV \$62.10   |                     | \$20.00     |

| Lot #                   | Description  | Closes Dec. 1, 2014 | Minimum Bid |
|-------------------------|--|---------------------|-------------|
| <b>Italy (Trieste)</b>  |  |                     |             |
| 208                     | Under allied military government control. #C13 with ovpt., U, LC, F/VF. CV \$8.00  |                     | \$2.00      |
| <b>Ivory Coast</b>      |  |                     |             |
| 209                     | 1939 New York Worlds Fair Issue, #163, 164, MNH, VF. '14 CV \$5.75   |                     | \$2.50      |
| <b>Jamaica</b>          |  |                     |             |
| 210                     | #21, U, MC, F/VF; 95, M, NG, F/VF; 118, M, LH, F/VF; 161, 165, 167, MLH. CV \$19.80  |                     | \$5.00      |
| <b>Japan</b>            |  |                     |             |
| 211                     | #280-281, 300, 313, 343, 344, 380, MNH. CV \$8.15  |                     | \$3.00      |
| <b>Korea</b>            |  |                     |             |
| 212                     | MNH: #410-411, pair; 550, 552-554, cpl set; 552a-554a, imperf S/S's of 1 each; 555, 557, 580-581, B9. CV \$57.65   |                     | \$23.00     |
| 213                     | #579, MNH. CV \$24.00  |                     | \$10.00     |
| <b>Korea (DPR)</b>      |  |                     |             |
| 214                     | One of a set of 9 sheets of 9 stamps each, Historic royalty, #2445 a-i, CTO. CV \$13.50  |                     | \$5.00      |
| <b>Latvia</b>           |  |                     |             |
| 215                     | #1, MH (looks like a double printing error); 23, U, MC, F/VF; 58 (x2) - one MH, one MNH. CV \$8.00   |                     | \$2.00      |
| 216                     | #64-67, MH, cpl set; 127, U, F/VF; 174-179 (174-177 are U; 178-179 MH - priced as used). CV \$5.00   |                     | \$1.50      |
| 217                     | #112, M, LH, F/VF. '14 CV \$35.00  |                     | \$12.00     |
| 218                     | #174-179, MLH; 215-216, MLH (215 has a small scuff, not counted in CV). Also, 216 block of 4, MNH. '14 CV \$8.70   |                     | \$2.00      |
| 219                     | #B21-B23, MLH. CV \$2.25   |                     | NMB         |
| <b>Leeward Islands</b>  |  |                     |             |
| 220                     | #1, MH, F/VF. Looks good but has a slight tear visible from gum side and a crease. '14 CV \$3.75   |                     | NMB         |
| <b>Liechtenstein</b>    |  |                     |             |
| 221                     | Postal museum issue S/S of 1936, #B14, MNH. '14 CV \$17.50   |                     | \$7.00      |
| <b>Luxembourg</b>       |  |                     |             |
| 222                     | Semi-Postals. MNH, cpl sets: #B258-B263; B264-B269; B270-B275 (x2); B276-B281 (x2); B287-B291; B292-B296. Quality material. CV \$25.40   |                     | \$10.00     |
| <b>Marshall Islands</b> |  |                     |             |
| 223                     | #466, MNH. '14 CV \$6.00   |                     | \$2.00      |
| <b>Memel</b>            |  |                     |             |
| 224                     | I've always been fascinated by countries bordering the Baltic Sea. Memel had a short stamp-issuing life, 92 stamps on album pages, a few in mounts, mostly MH. Airmails have some used. Also, included, an interesting article on Memel's history by Kenneth Woods. Stamps run from #3//99, C1-C7, C10-C17, C19-C29. (No occupation stamps.) This will be the best \$20 lot you'll see here in a good while. '13 CV \$195.00 |                     | \$20.00     |
| <b>Mexico</b>           |  |                     |             |
| 225                     | #826-827, C167-C169, MNH, cpl set; C206-C207, MNH. '14 CV \$6.40   |                     | \$3.00      |
| 226                     | Airmail. #C474 and C477, MNH, VF. '14 CV \$6.50  |                     | \$3.00      |
| 227                     | Donated club lot. Packets, 200 stamps, some older, probably to 1960, mostly used. Could be some decent values but mostly common stamps. Sort and catalog at a great price!   |                     | NMB         |
| <b>Netherlands</b>      |  |                     |             |
| 228                     | #4, U, LC, F/VF. '14 CV \$16.00  |                     | \$8.00      |
| 229                     | #24, U, MC, F/VF. '14 CV \$18.00   |                     | \$6.00      |
| 230                     | #215, MLH, F/VF; B327, MLH, VF. '14 CV \$11.00   |                     | \$5.00      |
| 231                     | #245-252, mostly MNH (couple MH); packet of 25 mostly MNH, 418//578. CV \$10.90  |                     | \$4.00      |
| 232                     | #323, 324, MNH, VF. '14 CV \$7.50  |                     | \$3.00      |

| Lot #                          | Description   | Closes Dec. 1, 2014 | Minimum Bid |
|--------------------------------|---|---------------------|-------------|
| <b>Netherlands (continued)</b> |   |                     |             |
| 233                            | #B1-B3, U, cpl set ... but wait a minute! Scott notes: B1-B3 cancelled-to-order "Amsterdam 31.07 10-12N" (these), sell at \$3.00 a set. Also, C10, C11, MH. '14 CV \$3.75   |                     | NMB         |
| <b>Nevis</b>                   |   |                     |             |
| 234                            | #465 a-b, 466 a-b, 467 a-b, MNH pairs, discovery of America anniv. '14 CV \$6.40  |                     | \$2.00      |
| <b>New Zealand</b>             |   |                     |             |
| 235                            | #196 (wmk 61), U, F/VF. '14 CV \$15.00  |                     | \$3.00      |
| <b>Niue</b>                    |   |                     |             |
| 236                            | #104, 105, MH, F/VF. '14 CV \$1.75  |                     | NMB         |
| <b>Nicaragua</b>               |   |                     |             |
| 237                            | 25 diff. CTO: #1646-1653, 1685-1689, 1691, 1821-1824, 1826, C1188-C1194. '08 CV \$6.75  |                     | \$2.00      |
| <b>Norway</b>                  |   |                     |             |
| 238                            | #279-289, MLH, cpl set, F/VF. Great set! CV \$47.05   |                     | \$15.00     |
| 239                            | Two cpl sets, MNH: #295-297, 299-301. CV \$9.90   |                     | \$3.00      |
| 240                            | Packet of 50 large commem. stamps. Looks like 1980s-90s. Approx. value \$12.50  |                     | \$5.00      |
| <b>Pakistan (Bahawalpur)</b>   |   |                     |             |
| 241                            | #1, 18-21, VF, MH. CV \$12.65   |                     | \$6.00      |
| <b>Papua New Guinea</b>        |   |                     |             |
| 242                            | MNH complete sets: #645-648, 677-680, 682-685; 782-785 with commemorative folder from World Columbian Stamp Expo, '92 Chicago. CV \$26.70   |                     | \$11.00     |
| 243                            | #655-658, MNH cpl set of 4. '14 CV \$8.20   |                     | \$2.50      |
| <b>Portugal</b>                |   |                     |             |
| 244                            | Packet of 100 large stamps, U and CTO. Looks like 1980s-90s. Value \$25.00  |                     | \$10.00     |
| <b>Rhodesia</b>                |   |                     |             |
| 245                            | Used. #51, M to HC, F/VF; 54, MC (a few short perfs); 83, M to HC (clipped corner) 85, LC, F/VF; 101, MC, F/VF; 102, MC, F/VF; 120, M to HC, F/VF. CV \$26.00   |                     | \$7.00      |
| <b>Romania.</b>                |   |                     |             |
| 246                            | 1939 S/S of King Carol I, #488B, MNH, small tear, creases, CV \$3.50. Also same S/S imperf, MNH, 488Ba (sm. crease) but with Berlin 1940 and Roma 1940 overprints and bars - not recognized as officially issued. Finally, 488C, MLH, with same overprint. So, how to value this lot? Est Value \$10.00   |                     | \$4.00      |
| <b>Russia</b>                  |   |                     |             |
| 247                            | Two small complete sets, MNH: #1087-1088, 1098-1099. '14 CV \$7.75  |                     | \$3.00      |
| 248                            | #2147-2151, CTO, cpl set; 5050-5055, MNH, cpl set; 5960-5963, MNH, paintings; 6002, MNH; 6031-6045, MNH, holidays and costumes, cpl set. CV \$11.40   |                     | \$4.00      |
| 249                            | MNH: #5429, 5541-5544, 5713, 5750-5753, 5851-5853, 5883, C98, C121. CV \$11.55  |                     | \$4.00      |
| <b>Russia (White Russia)</b>   |   |                     |             |
| 250                            | Not issued, 5 MH imperf stamps, wide margins. Est Value \$5.00  |                     | \$2.00      |
| <b>Rwanda</b>                  |   |                     |             |
| 251                            | Two complete sets, MNH: #137-142, 211-218. CV \$5.65  |                     | \$2.00      |
| <b>St. Kitts-Nevis</b>         |   |                     |             |
| 252                            | MNH: #91-92, 161-162, 185-187, 191-194, 202-205, 234-237, 249-252, 253-256, 280-283, 296-299, 335-338, 339-341, all complete sets. CV \$11.20   |                     | \$4.00      |
| <b>St. Lucia</b>               |   |                     |             |
| 253                            | MNH: #127-128, 227-228, 231-234, 237-240, 245-248, 290-293, 304-307, 312-315, 324-327, 345-348, 351-354, complete sets. Also, one partial set, 267-270. CV \$12.10  |                     | \$5.00      |
| <b>St. Pierre and Miquelon</b> |   |                     |             |
| 254                            | A collection of 567 stamps (counting stamps in several strips and one S/S of 10 stamps). Mostly MH and MNH on album pages, lesser number of used. Complete Scott # list with '13 values. Lots of valuable stamps: #2, 3, 6, 11, 15, 19, 25, 26, 30, 35, 36, 38, 39, 40- 50, and on and on and on. #2//777, with some B-O-B. Questions? Call Manager (562) 695-0104. Incredible at 10% of CV. Total '13 CV \$3229.70 |                     | \$320.00    |

| Lot #                        | Description  | Closes Dec. 1, 2014 | Minimum Bid |
|------------------------------|--|---------------------|-------------|
| <b>St. Thomas and Prince</b> |  |                     |             |
| 255                          | #827A-827C, 1037-1040, CTO. Butterflies. CV \$11.00  |                     | \$3.00      |
| <b>St. Vincent</b>           |  |                     |             |
| 256                          | The 1992 limited edition boxed set of 12 baseball card stamps, #1693-1704. Now I've seen it all! Most unusual self-adhesive complete MNH set (size 64 x 89mm). 12 Hall of Famers ... Ty Cobb, Dizzy Dean, Bob Feller, Lou Gehrig and more. Wonderful unique set in original sealed package. '12 CV \$36.00. Batter Up! |                     | \$10.00     |
| 257                          | #2081, S/S of 9 diff (#a-i), MNH, famous men in aviation and space. Also, <b>St. Vincent Grenadines</b> : 827, Disney/Snow white, S/S of 1, MNH; 964, Disney/Goldilocks & Bears, S/S of 9; 965, Disney/Princess and the Pea, S/S of 9, MNH. CV \$27.10   |                     | \$10.00     |
| <b>Salvador, El</b>          |  |                     |             |
| 258                          | #76, 77, 91, 92, 99, 362, MH; 93, U, LC. CV \$4.00   |                     | NMB         |
| <b>Samoa (Western Samoa)</b> |  |                     |             |
| 259                          | #214, 215, MH, F/VF, QE II coronation issue. '14 CV \$1.75   |                     | NMB         |
| <b>Samoa</b>                 |  |                     |             |
| 260                          | #333-336, cpl set; 352-355, cpl set; 379-382, cpl set. CV \$5.20   |                     | \$2.00      |
| <b>San Marino</b>            |  |                     |             |
| 261                          | MNH complete sets: #607-608, 622-625, 639-642, 713-715, 828-831, 848-849, 889-890. CV \$5.95   |                     | \$2.00      |
| 262                          | MNH: #998-999, 1081-1082, 1434. CV \$11.25   |                     | \$3.00      |
| <b>Sierra Leone</b>          |  |                     |             |
| 263                          | Used: #199, MC, F/VF; 202, MC, F/VF; 203, MC, F/VF; 204, S-O-N "Freetown" cancel. CV \$12.40   |                     | \$4.00      |
| 264                          | Gorgeous 1990 set saluting the coming exploration of Mars. #1167, 1168, 1169, 1170 (each in a sheet of 9 all diff. stamps), MNH. Also 1171 and 1171A S/S's. Scott notes extreme speculation around 1171, the "Face on Mars" stamp (CV \$5.50). Colorful issue is a must for space exploration fans. '14 CV \$81.00     |                     | \$32.00     |
| <b>South West Africa</b>     |  |                     |             |
| 265                          | MNH, 2 sets: #156-158, 298-299. CV \$5.25  |                     | \$2.00      |
| <b>Spain</b>                 |  |                     |             |
| 266                          | #1033-1038, 1105-1107, 1115-1120, 1140-1150, 1182-1186, C171-C174, complete sets, MNH. CV \$25.60  |                     | \$9.00      |
| 267                          | Thirty-six large MNH stamps (from 1988), #2553-2590, includes 2562 and 2588 S/S's. '14 CV \$13.55  |                     | \$5.00      |
| 268                          | Twenty-two MNH stamps (complete year 1989), #2591-2617, includes 2601 S/S for EXFILNA '89, 2604 a-f, S/S block of 6 + 3 labels, 2617 a-d, S/S of 4. '10 CV \$12.50   |                     | \$5.00      |
| 269                          | Seventeen large MNH stamps (from 1990), #2618//2641, almost the complete year. Includes 2625 a-f block of 6 + 3 labels, 2626 S/S, EXFILNA '90, 2631 S/S Topical Philatelic Expo, and 2636 a-d, sheet of 4. Pristine stamps. '10 CV \$8.00  |                     | \$3.00      |
| 270                          | Twenty large MNH stamps (from 1991), #2643//2666, includes 2647 a-d, sheet of 4 and 2654 a-f, block of 6 + 3 labels. '10 CV \$10.00+   |                     | \$4.00      |
| 271                          | Nineteen large stamps (from 1992, 9 MNH, 10 U), plus 2672 and 2673, sheets of 12 + 4 labels with Madrid philatelic cancels. Quality lot. '10 CV \$14.00  |                     | \$5.00      |
| 272                          | Twenty-eight large MNH stamps (from 1993), #2697//2756 (King Juan Carlos set NOT included). Also, 2693-2695 U defins plus 2712 S/S MNH. Quality material. '10 CV \$18.00+  |                     | \$7.00      |
| 273                          | Thirty-seven large MNH stamps and one used (from 1994), #2757-2798 (includes one striking Dali Art set), plus Olympic sheet of 10 diff. #2797 a-j, MNH, and 2763 a-d block of 4 + label, MNH, Minerals. '10 CV \$19.00+  |                     | \$8.00      |
| 273A                         | #C158, MNH, F/VF. '14 CV \$30.00   |                     | \$10.00     |
| <b>Sweden</b>                |  |                     |             |
| 274                          | Packet of 62 large stamps. Looks like 1980s-90s. Value approx. \$15.50   |                     | \$6.00      |



| Lot #                               | Description  | Closes Dec. 1, 2014                  | Minimum Bid |
|-------------------------------------|--|--------------------------------------|-------------|
| <b>Switzerland</b>                  |  |                                      |             |
| 275                                 | Used: #247-255, MC, F/VF, cpl set of 9; 190-192, MC, cpl set of 3. '14 CV #35.75   |                                      | \$8.50      |
| 276                                 | #252, U, MC, F/VF. '14 CV \$8.25   |                                      | \$2.00      |
| 277                                 | Semi-postals. #B12-B14, U, M to HC, F/VF, set of 3; B68, U, MC, F, high value of set; B211, U, MC, F/VF, high value of set (2 x 3mm scrape). '14 CV \$25.00  |                                      | \$10.00     |
| 278                                 | Airmails. #C3, U, MC, F/VF; C5, U, MC, VF. '14 CV \$30.75  |                                      | \$7.50      |
| 279                                 | For the International Olympic Committee. Booklet pane in intact booklet #1202a, MNH. Also, same booklet with special Sydney 2000 cancellation. Finally, souvenir envelope with #1201-1202 stamps and special Olympic exhibition cancellation - very attractively done. <i>Est. value \$6.50</i>  |                                      | \$3.00      |
| <b>Tahiti</b>                       |  |                                      |             |
| 280                                 | It's not often I get to see a valuable expertized stamp. This one is accompanied by an APS Certificate: "Tahiti, Scott No. J12, unused, original gum, previously hinged, genuine, LR corner torn." The corner is clearly removed taking a small bit of the corner of the frame of this imperf stamp. '14 CV is \$1100.00. Here's a chance to own real South Pacific history! | <i>Reasonable offers considered.</i> |             |
| <b>Tanzania</b>                     |  |                                      |             |
| 281                                 | #267-270, 304-305, 315-318, 333-336, all MNH cpl sets. CV \$5.75   |                                      | \$2.00      |
| <b>Togo</b>                         |  |                                      |             |
| 282                                 | MNH complete sets: #432-437, 860-861, C210-C211, 798-801, C169-C170. CV \$14.85  |                                      | \$5.00      |
| <b>Tokelau</b>                      |  |                                      |             |
| 284                                 | MNH: #1-3, 6-8, 12-15, cpl sets. '13 CV \$12.95  |                                      | \$6.00      |
| 285                                 | #4, MH, F/VF, QE II Coronation Issue. '14 CV \$4.00  |                                      | \$1.00      |
| <b>Turkey</b>                       |  |                                      |             |
| 286                                 | #1427-1428, MNH; 1556-1559, MNH; Also <b>Turkish Republic of Northern Cyprus</b> , 98-99, 151-152. All cpl sets. CV \$6.95   |                                      | \$3.00      |
| 287                                 | Donated club lot. Approx 140 mostly U, more small than large, pre-1970 stamps. Good sorting exercise and filling some spaces at low cost.  |                                      | NMB         |
| <b>Turks &amp; Caicos</b>           |  |                                      |             |
| 288                                 | #141, MNH, blk of 4; 321-323, MNH, QE II 25 <sup>th</sup> anniv. Also, <b>Caicos Islands</b> , #11 S/S, royal wedding, MNH. '14 CV \$7.10  |                                      | \$3.00      |
| <b>Umm Al Qwain</b>                 |  |                                      |             |
| 289                                 | Tropical fish, 9 stamps, MNH. Not listed in Scott. Colorful group.   |                                      | NMB         |
| <b>Uruguay</b>                      |  |                                      |             |
| 290                                 | Donated club Lot. Packet of more than 200 common stamps, mostly U, more small than large, pre-1970. Gotta have catalog fun with these!   |                                      | NMB         |
| <b>Vatican City</b>                 |  |                                      |             |
| 291                                 | #C16, U, LC, F/VF. '14 CV \$10.00  |                                      | \$4.00      |
| <b>Y.A.R. (Yemen Arab Republic)</b> |  |                                      |             |
| 292                                 | President Kennedy and space achievements. #216-216E; 216F-216G (airmails). Complete MNH set of 8. '14 CV \$10.35   |                                      | \$4.50      |
| <b>Worldwide</b>                    |  |                                      |             |
| 293                                 | 60 stamps, M & U, all CV at 50 cents or above. 12 each country, nicely mounted on small sheets. Iceland, Turkey, Germany, Switzerland, France and Offices. CV \$84.45  |                                      | \$10.00     |
| 294                                 | Bird topicals. Used, VF; <b>Zambia</b> 496; <b>Aitutaki</b> , 534, O22. CV \$7.35  |                                      | NMB         |
| 295                                 | Lindner-T Stockbook, 10 pages, hingeless, contains 160 common stamps, U.S. and world mix, ALL PERFECT MINT, lots of JUMBOS and some U.S. worthy of SLAB. Couple of pairs, otherwise no dup. Classic to modern, all P.O. fresh. (Stockbook cover just fair, good pages, useable). Will cost you 25 cents per stamp!   |                                      | \$40.00     |

| Lot # | Description | Closes Dec. 1, 2014 | Minimum Bid |
|-------|-------------|---------------------|-------------|
|-------|-------------|---------------------|-------------|

**Worldwide (continued)**

296 Collection of nudes on stamps. I've never seen anything quite like this: 294 stamps, some in small sheets, some blocks, some singles, no dup, in German 16 page stockbook (green cover, black pages, clear pockets). A few real countries like **Liberia, Equatorial Africa, Paraguay, Guinea**. More from **Manama, Ajman, Oman, Yemen**. A fun and colorful collection with a good stockbook. Best Offer!

**BARGAIN BIN!**

*BARGAIN BIN TIME! The following lots have previously been listed in a sale and did not sell. Here they appear again at substantial discounts. You will find some real winners and some "ringers" and "wanna-bes," but all will be happy to find homes!*

**France**

BB297 #22, U, some clipped bottom perfs, L to MC. CV \$40.00. Reduced! Last chance! NMB  
 BB298 #34, 34a, missing a perf. CV \$51.50. Was \$8.00 in MBS #55. 50 percent off! \$4.00  
 BB299 18 large stamps, used: #130, 225, 314, 556, 715, 809, 1049, 1186, 1188, 1195, 218. MNH: 1056, 1359, 2311, 2312; MH: 343, 770, 2327. (Two space fillers, 129 and 388 not incl in CV). CV \$52.75. Was \$10.00 in MBS #55. Reduced by half! \$5.00

**Great Britain**

BB300 #119, M, NG; 118, U, HC, perfs clipped RS. CV \$44.00. Was \$8.00 in MBS #55. Now! \$4.00  
 BB301 #129, U, MC; 130b, deep green and red, M to HC ("Edinburgh"?). CV \$45.00. Was \$9.00 in MBS #55. Now half off! \$4.50  
 BB302 #148, U, MC; 152, U, MC; 157, M, NG (corner perf); 161, MH, F/VF. (Space filler 157 not included in CV). CV \$25.00. Was \$6.50 in MBS #55. Big reduction! \$3.00  
 BB303 #151, U, HC, F/VF; 152, U, MC, F/VF; 153, U, LC, F/VF; 154, U, F/VF (pen cancel). CV \$15.50. Was \$3.50 in MBS #55. Last time! NMB  
 BB304 #162, U, L to MC, F/VF; 163, U, LC, F/VF (paper adhesion); 164, U, S-O-N LC, F/VF; 167, U, MC, F/VF. CV \$18.25. Was \$4.00 in MBS #55. Now a better deal! \$2.00  
 BB305 #167, U, M to HC, F/VF; O4, U, L to Mc, F/VF; O55, U, MC, F/VF. CV \$13.50. Was \$3.00 in MBS #55. Totally reduced! NMB  
 BB306 #179, U, M to HC, F/VF (2 corner pulled perfs). *This is a CV \$75.00 stamp.* Was \$7.50 in MBS #55. Giant reduction! \$3.00  
 BB307 #180, U, HC, F/VF. CV \$125.00. Was \$25.00 in MBS #55. Final reduction! \$12.00  
 BB308 #206, U, LC, F/VF; 207, MH, F/VF; 208, U, MC, F/VF. CV \$16.60. Was \$3.00 in MBS #55. Can't go any lower! NMB  
 BB309 Used group. #249, MC, F/VF; 249A, M to HC, perfin, F/VF; 250, L to MC, F/VF (corner crease); 251, LC, F/VF (CV \$24); 251A, MC, F/VF. CV \$42.25. Was \$8.00 in MBS #55. 50% off! \$4.00  
 BB310 #313-316, U, cpl set, L to MC's. CV \$11.50. Was \$2.00 in MBS #55. Wow! NMB  
 BB311 Used, castle type: #1446, 1447, 1448, L to MC. CV \$6.20. Last try! NMB

**Norway**

BB312 #872a, booklet, intact, MNH, 10 stamps, complete. CV \$22.50. Was \$10.00. Half off! \$5.00

**Papua New Guinea**

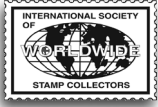
BB313 #410-414, MNH, blocks of 4 each. CV \$18.00. Was \$5.00 in MBS #55. Here's a deal! \$2.50

**Russia**

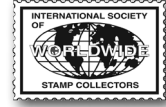
BB314 #2732, block of 6 (a-f), MNH. Rockets and satellites issue. CV \$7.50. Was \$3.00. Now! NMB

**St. Vincent**

BB315 Donated to club. Michael Jackson, #894-897 in pairs, MNH. CV \$9.00. Was \$2.00 in MBS #55. "Monster" deal! NMB



**MAIL BID SALES #61 BID SHEET ~ CLOSES DEC. 1, 2014**



*Please print clearly or attach an address label.*  
 Mail to ISWSC MA #61, c/o Mike Crump, P.O. Box 580, Whittier CA 90608-0580  
 You may also scan and email your bids to desoto1947@yahoo.com

MEMBER # \_\_\_\_\_ NAME \_\_\_\_\_

ADDRESS \_\_\_\_\_  
*Street City State Zip Code Country*

PHONE \_\_\_\_\_ EMAIL \_\_\_\_\_

| LOT # | BID | LOT # | BID | LOT # | BID | LOT # | BID | LOT # | BID |
|-------|-----|-------|-----|-------|-----|-------|-----|-------|-----|
|       |     |       |     |       |     |       |     |       |     |
|       |     |       |     |       |     |       |     |       |     |
|       |     |       |     |       |     |       |     |       |     |
|       |     |       |     |       |     |       |     |       |     |
|       |     |       |     |       |     |       |     |       |     |
|       |     |       |     |       |     |       |     |       |     |
|       |     |       |     |       |     |       |     |       |     |
|       |     |       |     |       |     |       |     |       |     |
|       |     |       |     |       |     |       |     |       |     |
|       |     |       |     |       |     |       |     |       |     |
|       |     |       |     |       |     |       |     |       |     |
|       |     |       |     |       |     |       |     |       |     |
|       |     |       |     |       |     |       |     |       |     |
|       |     |       |     |       |     |       |     |       |     |
|       |     |       |     |       |     |       |     |       |     |
|       |     |       |     |       |     |       |     |       |     |
|       |     |       |     |       |     |       |     |       |     |
|       |     |       |     |       |     |       |     |       |     |
|       |     |       |     |       |     |       |     |       |     |
|       |     |       |     |       |     |       |     |       |     |
|       |     |       |     |       |     |       |     |       |     |

*You can pay with Paypal by inserting ExecutiveDirector@iswsc.org in the payee window.*

**MAIL BID SALES RULES AND INFORMATION**

**BID INCREMENTS**

|                 |     |
|-----------------|-----|
| \$1 to \$9.99   | 50¢ |
| \$10 to \$29.99 | \$1 |
| \$30 to \$99.99 | \$2 |
| \$100 or more   | \$5 |

Bid in these increments only. Odd amounts will be lowered to the next lowest increment. All bids must be in U.S. currency.

- High bidder wins at one advance over second-highest bidder.
- If there are tie bids, the earliest postmark wins.
- If only one bid is received, lot goes at the minimum bid listed by the owner.
- State the highest you are willing to pay. Your high bid will be used only if necessary. No "buy" bids or requests for percentage increases will be accepted.
- Mis-described or misidentified lots will be returned. No returns on large lots or collections, etc.
- The mail bid sale manager reserves the right to decline unreasonably low bids.
- Lot information will be sent to successful bidders with an invoice. The invoice will include postage and insurance fees, if appropriate. Payment is expected in U.S. currency within 10 days of the invoice date.
- Lots totaling \$100 or more and shipped in one package will be insured. To request insurance on shipments totaling less than \$100, contact the mail bid sale manager.
- Lots will be shipped and billed by the mail bid sale manager and payment should be sent to the address on the invoice. PayPal can be used by sending funds to ExecutiveDirector@iswsc.org on the PayPal website, www.paypal.com. There will be an additional 10% fee to cover these transactions. PayPal users should notify the auction manager by e-mail when payment has been made. The Society does not accept credit cards for payment.